

PUSHBUTTON SWITCHES

LOW COST SEALED PUSHBUTTON

SERIES 47:



ACTUAL SIZE



LOW COST SEALED PUSHBUTTON SWITCH

The Series 47 is a uniquely designed sealed miniature pushbutton switch. The silicone button and body can be panel mounted and terminated with a standard connector or mounted in a P.C. board. The switches come in two levels of sealing: a panel sealed only version and a fully sealed version with epoxy sealed base. Both meet respective IP67 requirements. The buttons are available in seven different colors. All this at a very affordable price.

KEY FEATURES:

- Sealed to IP67
- Small size
- 7 button colors
- P.C. terminals (connector available)
- Long life
- Low cost

APPLICATIONS

- Marine equipment
- Medical equipment
- Outdoor controls
- Food processing equipment
- Appliances
- Recreational vehicles

ORDERING INFORMATION:

Part Number	Button Color	Panel Sealed	Epoxy Sealed Base
47-1111	Black	✓	✓
47-1121	Red	✓	✓
47-1131	Green	✓	✓
47-1141	White	✓	✓
47-1151	Yellow	✓	✓
47-1161	Blue	✓	✓
47-1171	Orange	✓	✓
47-2111	Black	✓	
47-2121	Red	✓	
47-2131	Green	✓	
47-2141	White	✓	
47-2151	Yellow	✓	
47-2161	Blue	✓	
47-2171	Orange	✓	



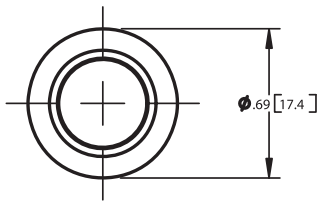
STANDARDS / AGENCY / RATINGS:



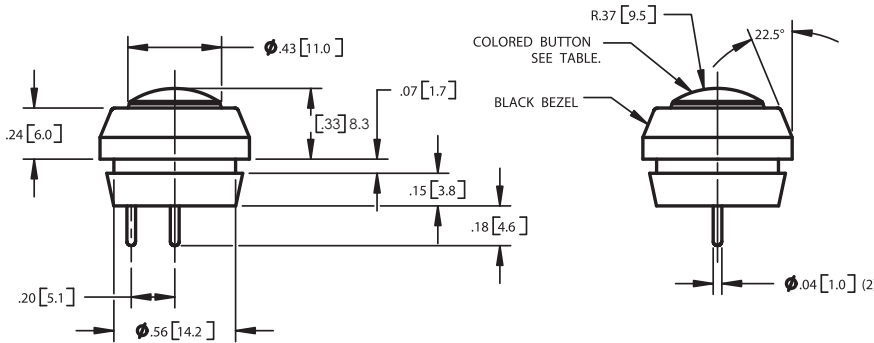
SERIES 47: LOW COST SEALED SWITCH

PUSHBUTTON SWITCHES

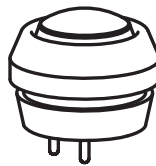
47-XXX



SCHMATIC
FORM A
SPST-NO



Installation of a bi-directional TVS diode between the outer terminal of the switch and ground is recommended to avoid voltage spikes. Consult the factory for details.



In2Connect UK Ltd
Unit L, Tyson Courtyard
Weldon South Industrial Estate
Corby
Northants
NN18 8AZ UK
Tel: 01962 773004
sales@in2connect.uk.com

MECHANICAL / ELECTRICAL CHARACTERISTICS:

Travel (nom):
.020 inches

Life:
100,000 cycles

Operating force:
1,000 grams (nominal)

Sealed to:
IP67

Operating temperature:
-40°C to +85°C

Button material:
silicone

Contact:
metal snap dome providing a tactile feel

Terminal finish:
gold over nickel

Dielectric strength:
1,000 VAC

Insulation Resistance:
10,000 MΩ

Contact Resistance (initial):
<100 Ω

Current rating:
20 mA @ 28 VDC

Switch terminals mate with ITW Pancon Mas-Con Connector CE100F24-3-DB

Recommended panel cut-out:
0.565" / 0.560" diameter
(ø14.40 / 14.22)

Recommended panel thickness:
0.060" (1.52) max