

D-SUB STANDARD – DUAL PORT

Solder pin – Angled – Precision machined contacts – .625" / 15.88 mm Connector spacing



RoHS compliant – CSA listed, File No.: LR 115000-1 – UL listed, File No.: E202784

DESCRIPTION

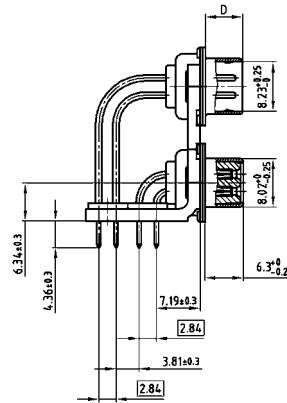
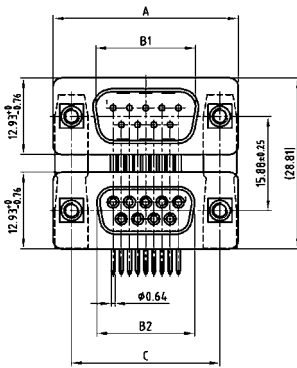
- Variations: pin – pin; socket – socket; pin – socket
- Mounting styles:
 - with mounting bracket and 4-40 UNC or M3 threaded insert
 - with mounting bracket and 4-40 UNC or M3 front spacer
 - with mounting bracket, PCB clip and 4-40 UNC or M3 threaded insert
 - with mounting bracket, PCB clip and 4-40 UNC or M3 front spacer
- Quality class 3 (also available in quality class 1)
- Shell: Steel tin plated (brass tin plated or stainless steel available on request)

PRODUCT DRAWING



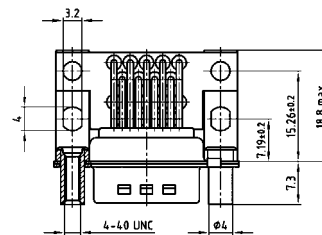
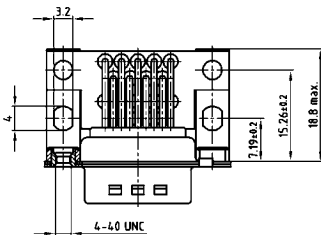
No. of pos.	A -0.76	B1 +0.25	B2 -0.25	C	D -0.30
2X 09	31.19	16.79	16.46	25.00 +0.12	6.12
2X 15	39.52	25.12	24.79	33.30 +0.15 +0.10	6.12
2X 25	53.42	38.84	38.50	47.04 +0.13	5.99
2X 37	69.70	55.30	54.96	63.50 +0.13	5.99

Graphically representation of only one variant!



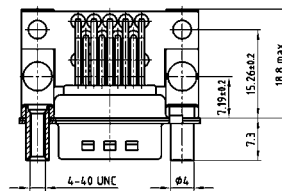
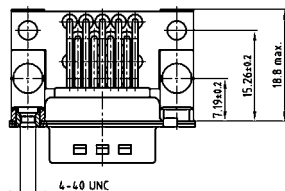
Mounting style: Threaded insert

Mounting style: Front spacer



Mounting style: PCB clip, threaded insert

Mounting style: PCB clip, front spacer

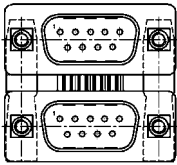


D-SUB STANDARD – DUAL PORT VARIATIONS

Solder pin – Angled – Precision machined contacts – .625" / 15.88 mm Connector spacing

ORDER DATA

PCB layout: Kat1U5A

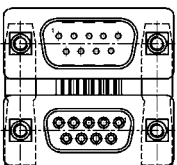


Variation:
plug upper –
plug bottom

No. of pos.	Mounting style 4-40 UNC	Part Number
09 / 09	Threaded insert	163 A 15199 X
15 / 15	Threaded insert	163 A 15209 X
25 / 25	Threaded insert	163 A 15219 X
37 / 37	Threaded insert	163 A 15229 X
09 / 09	Front spacer	163 A 15359 X
15 / 15	Front spacer	163 A 15369 X
25 / 25	Front spacer	163 A 15379 X
37 / 37	Front spacer	163 A 15389 X
09 / 09	PCB clip / Threaded insert	163 A 19969 X
15 / 15	PCB clip / Threaded insert	163 A 19979 X
25 / 25	PCB clip / Threaded insert	163 A 19989 X
37 / 37	PCB clip / Threaded insert	163 A 19999 X
09 / 09	PCB clip / Front spacer	163 A 19329 X
15 / 15	PCB clip / Front spacer	163 A 19339 X
25 / 25	PCB clip / Front spacer	163 A 19349 X
37 / 37	PCB clip / Front spacer	163 A 19359 X

No. of pos.	Mounting style M3	Part Number
09 / 09	Threaded insert	163 A 15279 X
15 / 15	Threaded insert	163 A 15289 X
25 / 25	Threaded insert	163 A 15299 X
37 / 37	Threaded insert	163 A 15309 X
09 / 09	Front spacer	163 A 15439 X
15 / 15	Front spacer	163 A 15449 X
25 / 25	Front spacer	163 A 15459 X
37 / 37	Front spacer	163 A 15469 X
09 / 09	PCB clip / Threaded insert	163 A 20049 X
15 / 15	PCB clip / Threaded insert	163 A 20059 X
25 / 25	PCB clip / Threaded insert	163 A 20069 X
37 / 37	PCB clip / Threaded insert	163 A 20079 X
09 / 09	PCB clip / Front spacer	163 A 19409 X
15 / 15	PCB clip / Front spacer	163 A 19419 X
25 / 25	PCB clip / Front spacer	163 A 19429 X
37 / 37	PCB clip / Front spacer	163 A 19439 X

PCB layout: Kat1U6A

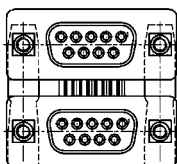


Variation:
plug upper –
socket bottom

No. of pos.	Mounting style 4-40 UNC	Part Number
09 / 09	Threaded insert	163 A 15239 X
15 / 15	Threaded insert	163 A 15249 X
25 / 25	Threaded insert	163 A 15259 X
37 / 37	Threaded insert	163 A 15269 X
09 / 09	Front spacer	163 A 15399 X
15 / 15	Front spacer	163 A 15409 X
25 / 25	Front spacer	163 A 15419 X
37 / 37	Front spacer	163 A 15429 X
09 / 09	PCB clip / Threaded insert	163 A 20009 X
15 / 15	PCB clip / Threaded insert	163 A 20019 X
25 / 25	PCB clip / Threaded insert	163 A 20029 X
37 / 37	PCB clip / Threaded insert	163 A 20039 X
09 / 09	PCB clip / Front spacer	163 A 19369 X
15 / 15	PCB clip / Front spacer	163 A 19379 X
25 / 25	PCB clip / Front spacer	163 A 19389 X
37 / 37	PCB clip / Front spacer	163 A 19399 X

No. of pos.	Mounting style M3	Part Number
09 / 09	Threaded insert	163 A 15319 X
15 / 15	Threaded insert	163 A 15329 X
25 / 25	Threaded insert	163 A 15339 X
37 / 37	Threaded insert	163 A 15349 X
09 / 09	Front spacer	163 A 15479 X
15 / 15	Front spacer	163 A 15489 X
25 / 25	Front spacer	163 A 15499 X
37 / 37	Front spacer	163 A 15509 X
09 / 09	PCB clip / Threaded insert	163 A 20089 X
15 / 15	PCB clip / Threaded insert	163 A 20099 X
25 / 25	PCB clip / Threaded insert	163 A 20109 X
37 / 37	PCB clip / Threaded insert	163 A 20119 X
09 / 09	PCB clip / Front spacer	163 A 19449 X
15 / 15	PCB clip / Front spacer	163 A 19459 X
25 / 25	PCB clip / Front spacer	163 A 19469 X
37 / 37	PCB clip / Front spacer	163 A 19479 X

PCB layout: Kat1U6A

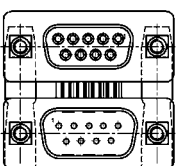


Variation:
socket upper –
socket bottom

No. of pos.	Mounting style 4-40 UNC	Part Number
09 / 09	Threaded insert	164 A 15609 X
15 / 15	Threaded insert	164 A 15619 X
25 / 25	Threaded insert	164 A 15629 X
37 / 37	Threaded insert	164 A 15639 X
09 / 09	Front spacer	164 A 15769 X
15 / 15	Front spacer	164 A 15779 X
25 / 25	Front spacer	164 A 15789 X
37 / 37	Front spacer	164 A 15799 X
09 / 09	PCB clip / Threaded insert	164 A 20409 X
15 / 15	PCB clip / Threaded insert	164 A 20419 X
25 / 25	PCB clip / Threaded insert	164 A 20429 X
37 / 37	PCB clip / Threaded insert	164 A 20439 X
09 / 09	PCB clip / Front spacer	164 A 19759 X
15 / 15	PCB clip / Front spacer	164 A 19769 X
25 / 25	PCB clip / Front spacer	164 A 19779 X
37 / 37	PCB clip / Front spacer	164 A 19789 X

No. of pos.	Mounting style M3	Part Number
09 / 09	Threaded insert	164 A 15689 X
15 / 15	Threaded insert	164 A 15699 X
25 / 25	Threaded insert	164 A 15709 X
37 / 37	Threaded insert	164 A 15719 X
09 / 09	Front spacer	164 A 15849 X
15 / 15	Front spacer	164 A 15859 X
25 / 25	Front spacer	164 A 15869 X
37 / 37	Front spacer	164 A 15879 X
09 / 09	PCB clip / Threaded insert	164 A 20489 X
15 / 15	PCB clip / Threaded insert	164 A 20499 X
25 / 25	PCB clip / Threaded insert	164 A 20509 X
37 / 37	PCB clip / Threaded insert	164 A 20519 X
09 / 09	PCB clip / Front spacer	164 A 19839 X
15 / 15	PCB clip / Front spacer	164 A 19849 X
25 / 25	PCB clip / Front spacer	164 A 19859 X
37 / 37	PCB clip / Front spacer	164 A 19869 X

PCB layout: Kat1U6A



Variation:
socket upper –
plug bottom

No. of pos.	Mounting style 4-40 UNC	Part Number
09 / 09	Threaded insert	164 A 15649 X
15 / 15	Threaded insert	164 A 15659 X
25 / 25	Threaded insert	164 A 15669 X
37 / 37	Threaded insert	164 A 15679 X
09 / 09	Front spacer	164 A 15809 X
15 / 15	Front spacer	164 A 15819 X
25 / 25	Front spacer	164 A 15829 X
37 / 37	Front spacer	164 A 15839 X
09 / 09	PCB clip / Threaded insert	164 A 20449 X
15 / 15	PCB clip / Threaded insert	164 A 20459 X
25 / 25	PCB clip / Threaded insert	164 A 20469 X
37 / 37	PCB clip / Threaded insert	164 A 20479 X
09 / 09	PCB clip / Front spacer	164 A 19799 X
15 / 15	PCB clip / Front spacer	164 A 19809 X
25 / 25	PCB clip / Front spacer	164 A 19819 X
37 / 37	PCB clip / Front spacer	164 A 19829 X

No. of pos.	Mounting style M3	Part Number
09 / 09	Threaded insert	164 A 15729 X
15 / 15	Threaded insert	164 A 15739 X
25 / 25	Threaded insert	164 A 15749 X
37 / 37	Threaded insert	164 A 15759 X
09 / 09	Front spacer	164 A 15889 X
15 / 15	Front spacer	164 A 15899 X
25 / 25	Front spacer	164 A 15909 X
37 / 37	Front spacer	164 A 15919 X
09 / 09	PCB clip / Threaded insert	164 A 20529 X
15 / 15	PCB clip / Threaded insert	164 A 20539 X
25 / 25	PCB clip / Threaded insert	164 A 20549 X
37 / 37	PCB clip / Threaded insert	164 A 20559 X
09 / 09	PCB clip / Front spacer	164 A 19879 X
15 / 15	PCB clip / Front spacer	164 A 19889 X
25 / 25	PCB clip / Front spacer	164 A 19899 X
37 / 37	PCB clip / Front spacer	164 A 19909 X

PCB clip .122"/3.1 ± .004"/0.10 mm hole diameter and .063"/1.6 mm circuit board thickness

D-SUB STANDARD – DUAL PORT

Solder pin – Angled – Precision machined contacts – .750" / 19.05 mm Connector spacing



RoHS compliant – CSA listed, File No.: LR 115000-1 – UL listed, File No.: E202784

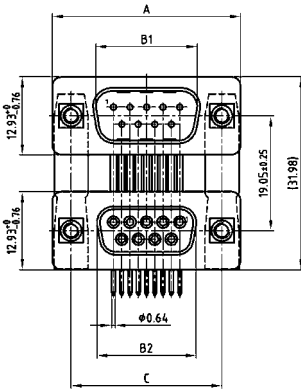
DESCRIPTION

- Variations: pin – pin; socket – socket; pin – socket
- Mounting styles:
 - with mounting bracket and 4-40 UNC or M3 threaded insert
 - with mounting bracket and 4-40 UNC or M3 front spacer
 - with mounting bracket, PCB clip and 4-40 UNC or M3 threaded insert
 - with mounting bracket, PCB clip and 4-40 UNC or M3 front spacer
- Quality class 3 (also available in quality class 1)
- Shell: Steel tin plated (brass tin plated or stainless steel available on request)

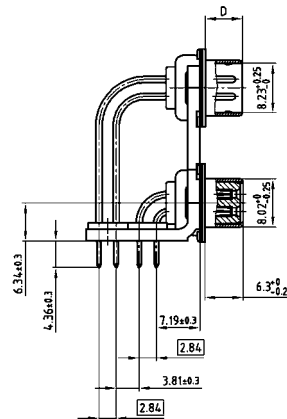
PRODUCT DRAWING

No. of pos.	A -0.76	B1 +0.25	B2 -0.25	C	D -0.30
2X 09	31.19	16.79	16.46	25.00 +0.12	6.12
2X 15	39.52	25.12	24.79	33.30 +0.15 +0.10	6.12
2X 25	53.42	38.84	38.50	47.04 +0.13	5.99
2X 37	69.70	55.30	54.96	63.50 +0.13	5.99

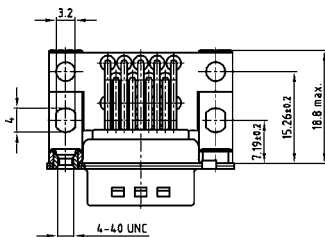
Graphically representation of only one variant!



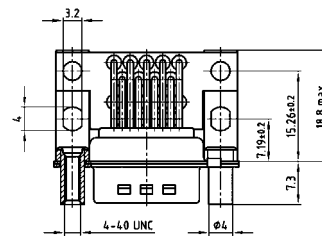
Mounting style: Threaded insert



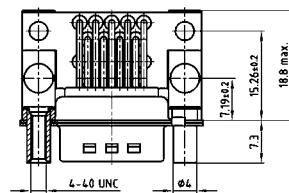
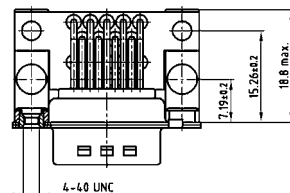
Mounting style: Front spacer



Mounting style: PCB clip, threaded insert



Mounting style: PCB clip, front spacer

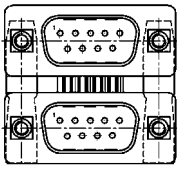


D-SUB STANDARD – DUAL PORT VARIATIONS

Solder pin – Angled – Precision machined contacts – .750" / 19.05 mm Connector spacing

ORDER DATA

PCB layout: Kat1IU5A

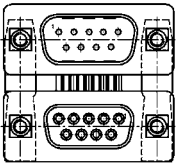


Variation:
plug upper –
plug bottom

No. of pos.	Mounting style 4-40 UNC	Part Number
09 / 09	Threaded insert	163 A 15519 X
15 / 15	Threaded insert	163 A 15529 X
25 / 25	Threaded insert	163 A 15539 X
37 / 37	Threaded insert	163 A 15549 X
09 / 09	Front spacer	163 A 15679 X
15 / 15	Front spacer	163 A 15689 X
25 / 25	Front spacer	163 A 15699 X
37 / 37	Front spacer	163 A 15709 X
09 / 09	PCB clip / Threaded insert	163 A 19489 X
15 / 15	PCB clip / Threaded insert	163 A 19499 X
25 / 25	PCB clip / Threaded insert	163 A 19509 X
37 / 37	PCB clip / Threaded insert	163 A 19519 X
09 / 09	PCB clip / Front spacer	163 A 19649 X
15 / 15	PCB clip / Front spacer	163 A 19659 X
25 / 25	PCB clip / Front spacer	163 A 19669 X
37 / 37	PCB clip / Front spacer	163 A 19679 X

No. of pos.	Mounting style M3	Part Number
09 / 09	Threaded insert	163 A 15599 X
15 / 15	Threaded insert	163 A 15609 X
25 / 25	Threaded insert	163 A 15619 X
37 / 37	Threaded insert	163 A 15629 X
09 / 09	Front spacer	163 A 15759 X
15 / 15	Front spacer	163 A 15769 X
25 / 25	Front spacer	163 A 15779 X
37 / 37	Front spacer	163 A 15789 X
09 / 09	PCB clip / Threaded insert	163 A 19569 X
15 / 15	PCB clip / Threaded insert	163 A 19579 X
25 / 25	PCB clip / Threaded insert	163 A 19589 X
37 / 37	PCB clip / Threaded insert	163 A 19599 X
09 / 09	PCB clip / Front spacer	163 A 19729 X
15 / 15	PCB clip / Front spacer	163 A 19739 X
25 / 25	PCB clip / Front spacer	163 A 19749 X
37 / 37	PCB clip / Front spacer	163 A 19759 X

PCB layout: Kat1IU6A

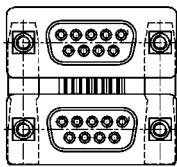


Variation:
plug upper –
socket bottom

No. of pos.	Mounting style 4-40 UNC	Part Number
09 / 09	Threaded insert	163 A 15559 X
15 / 15	Threaded insert	163 A 15569 X
25 / 25	Threaded insert	163 A 15579 X
37 / 37	Threaded insert	163 A 15589 X
09 / 09	Front spacer	163 A 15719 X
15 / 15	Front spacer	163 A 15729 X
25 / 25	Front spacer	163 A 15739 X
37 / 37	Front spacer	163 A 15749 X
09 / 09	PCB clip / Threaded insert	163 A 19529 X
15 / 15	PCB clip / Threaded insert	163 A 19539 X
25 / 25	PCB clip / Threaded insert	163 A 19549 X
37 / 37	PCB clip / Threaded insert	163 A 19559 X
09 / 09	PCB clip / Front spacer	163 A 19689 X
15 / 15	PCB clip / Front spacer	163 A 19699 X
25 / 25	PCB clip / Front spacer	163 A 19709 X
37 / 37	PCB clip / Front spacer	163 A 19719 X

No. of pos.	Mounting style M3	Part Number
09 / 09	Threaded insert	163 A 15639 X
15 / 15	Threaded insert	163 A 15649 X
25 / 25	Threaded insert	163 A 15659 X
37 / 37	Threaded insert	163 A 15669 X
09 / 09	Front spacer	163 A 15799 X
15 / 15	Front spacer	163 A 15809 X
25 / 25	Front spacer	163 A 15819 X
37 / 37	Front spacer	163 A 15829 X
09 / 09	PCB clip / Threaded insert	163 A 19609 X
15 / 15	PCB clip / Threaded insert	163 A 19619 X
25 / 25	PCB clip / Threaded insert	163 A 19629 X
37 / 37	PCB clip / Threaded insert	163 A 19639 X
09 / 09	PCB clip / Front spacer	163 A 19769 X
15 / 15	PCB clip / Front spacer	163 A 19779 X
25 / 25	PCB clip / Front spacer	163 A 19789 X
37 / 37	PCB clip / Front spacer	163 A 19799 X

PCB layout: Kat1IU6A

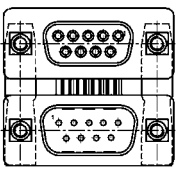


Variation:
socket upper –
socket bottom

No. of pos.	Mounting style 4-40 UNC	Part Number
09 / 09	Threaded insert	164 A 15929 X
15 / 15	Threaded insert	164 A 15939 X
25 / 25	Threaded insert	164 A 15949 X
37 / 37	Threaded insert	164 A 15959 X
09 / 09	Front spacer	164 A 16089 X
15 / 15	Front spacer	164 A 16099 X
25 / 25	Front spacer	164 A 16109 X
37 / 37	Front spacer	164 A 16119 X
09 / 09	PCB clip / Threaded insert	164 A 19919 X
15 / 15	PCB clip / Threaded insert	164 A 19929 X
25 / 25	PCB clip / Threaded insert	164 A 19939 X
37 / 37	PCB clip / Threaded insert	164 A 19949 X
09 / 09	PCB clip / Front spacer	164 A 20079 X
15 / 15	PCB clip / Front spacer	164 A 20089 X
25 / 25	PCB clip / Front spacer	164 A 20099 X
37 / 37	PCB clip / Front spacer	164 A 20109 X

No. of pos.	Mounting style M3	Part Number
09 / 09	Threaded insert	164 A 16009 X
15 / 15	Threaded insert	164 A 16019 X
25 / 25	Threaded insert	164 A 16029 X
37 / 37	Threaded insert	164 A 16039 X
09 / 09	Front spacer	164 A 16169 X
15 / 15	Front spacer	164 A 16179 X
25 / 25	Front spacer	164 A 16189 X
37 / 37	Front spacer	164 A 16199 X
09 / 09	PCB clip / Threaded insert	164 A 19999 X
15 / 15	PCB clip / Threaded insert	164 A 20009 X
25 / 25	PCB clip / Threaded insert	164 A 20019 X
37 / 37	PCB clip / Threaded insert	164 A 20029 X
09 / 09	PCB clip / Front spacer	164 A 20159 X
15 / 15	PCB clip / Front spacer	164 A 20169 X
25 / 25	PCB clip / Front spacer	164 A 20179 X
37 / 37	PCB clip / Front spacer	164 A 20189 X

PCB layout: Kat1IU5A



Variation:
socket upper –
plug bottom

No. of pos.	Mounting style 4-40 UNC	Part Number
09 / 09	Threaded insert	164 A 15969 X
15 / 15	Threaded insert	164 A 15979 X
25 / 25	Threaded insert	164 A 15989 X
37 / 37	Threaded insert	164 A 15999 X
09 / 09	Front spacer	164 A 16129 X
15 / 15	Front spacer	164 A 16139 X
25 / 25	Front spacer	164 A 16149 X
37 / 37	Front spacer	164 A 16159 X
09 / 09	PCB clip / Threaded insert	164 A 19959 X
15 / 15	PCB clip / Threaded insert	164 A 19969 X
25 / 25	PCB clip / Threaded insert	164 A 19979 X
37 / 37	PCB clip / Threaded insert	164 A 19989 X
09 / 09	PCB clip / Front spacer	164 A 20119 X
15 / 15	PCB clip / Front spacer	164 A 20129 X
25 / 25	PCB clip / Front spacer	164 A 20139 X
37 / 37	PCB clip / Front spacer	164 A 20149 X

No. of pos.	Mounting style M3	Part Number
09 / 09	Threaded insert	164 A 16049 X
15 / 15	Threaded insert	164 A 16059 X
25 / 25	Threaded insert	164 A 16069 X
37 / 37	Threaded insert	164 A 16079 X
09 / 09	Front spacer	164 A 16209 X
15 / 15	Front spacer	164 A 16219 X
25 / 25	Front spacer	164 A 16229 X
37 / 37	Front spacer	164 A 16239 X
09 / 09	PCB clip / Threaded insert	164 A 20039 X
15 / 15	PCB clip / Threaded insert	164 A 20049 X
25 / 25	PCB clip / Threaded insert	164 A 20059 X
37 / 37	PCB clip / Threaded insert	164 A 20069 X
09 / 09	PCB clip / Front spacer	164 A 20199 X
15 / 15	PCB clip / Front spacer	164 A 20209 X
25 / 25	PCB clip / Front spacer	164 A 20219 X
37 / 37	PCB clip / Front spacer	164 A 20229 X

PCB clip .122"/3.1 ± .004"/0.10 mm hole diameter and .063"/1.6 mm circuit board thickness

D-SUB STANDARD – DUAL PORT

Solder pin – Angled – Stamped contacts – .625" / 15.88 mm Connector spacing

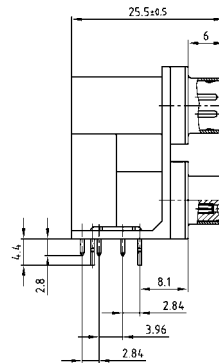
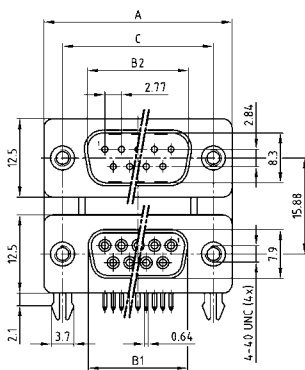


RoHS compliant – CSA listed, File No.: LR 115000-1 – UL listed, File No.: E202784

DESCRIPTION

- Variations: pin – pin; socket – socket; pin – socket
- Mounting style:
with mounting bracket, PCB clip and
4-40 UNC threaded insert
- Quality class 3 (other quality classes on request)
- Shell: Steel tin plated

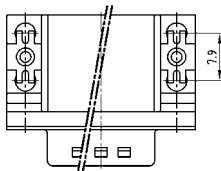
PRODUCT DRAWING



No. of pos.	A	B1	B2	C
2X 09	30.80	16.30	16.92	25.00
2X 15	39.20	24.60	25.25	33.30
2X 25	53.10	38.30	38.96	47.04
2X 37	69.40	54.80	55.42	63.50

Graphically representation of only one variant!

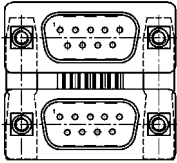
Mounting style: PCB clip, threaded insert



D-SUB STANDARD – DUAL PORT VARIATIONS

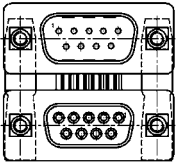
Solder pin – Angled – Stamped contacts – .625" / 15.88 mm Connector spacing

ORDER DATA



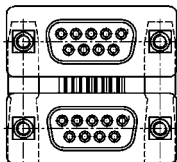
No. of pos.	Mounting style 4-40 UNC	Part Number
09 / 09	PCB clip/Threaded insert	DLS 1PP5AN21 X
15 / 15	PCB clip/Threaded insert	DLS 2PP5AN21 X
25 / 25	PCB clip/Threaded insert	DLS 3PP5AN21 X
37 / 37	PCB clip/Threaded insert	DLS 4PP5AN21 X

Variation:
plug upper –
plug bottom



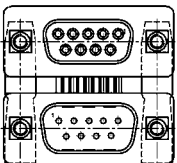
No. of pos.	Mounting style 4-40 UNC	Part Number
09 / 09	PCB clip/Threaded insert	DLS 1PS5AN21 X
15 / 15	PCB clip/Threaded insert	DLS 2PS5AN21 X
25 / 25	PCB clip/Threaded insert	DLS 3PS5AN21 X
37 / 37	PCB clip/Threaded insert	DLS 4PS5AN21 X

Variation:
plug upper –
socket bottom



No. of pos.	Mounting style 4-40 UNC	Part Number
09 / 09	PCB clip/Threaded insert	DLS 1SS5AN21 X
15 / 15	PCB clip/Threaded insert	DLS 2SS5AN21 X
25 / 25	PCB clip/Threaded insert	DLS 3SS5AN21 X
37 / 37	PCB clip/Threaded insert	DLS 4SS5AN21 X

Variation:
socket upper –
socket bottom



No. of pos.	Mounting style 4-40 UNC	Part Number
09 / 09	PCB clip/Threaded insert	DLS 1SP5AN21 X
15 / 15	PCB clip/Threaded insert	DLS 2SP5AN21 X
25 / 25	PCB clip/Threaded insert	DLS 3SP5AN21 X
37 / 37	PCB clip/Threaded insert	DLS 4SP5AN21 X

PCB clip .122" / 3.1 ± .004" / 0.10 mm hole diameter and .063" / 1.6 mm circuit board thickness

Variation:
socket upper –
plug bottom

D-SUB STANDARD – DUAL PORT

Solder pin – Angled – Stamped contacts – .750" / 19.05 mm Connector spacing

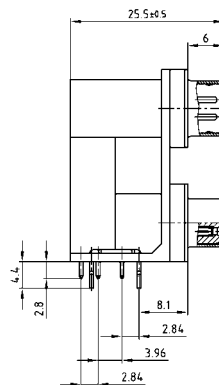
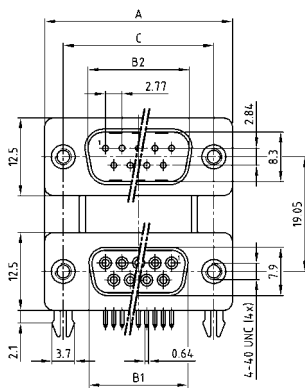


RoHS compliant – CSA listed, File No.: LR 115000-1 – UL listed, File No.: E202784

DESCRIPTION

- Variations: pin – pin; socket – socket; pin – socket
- Mounting style:
with mounting bracket, PCB clip and 4-40 UNC threaded insert
- Quality class 3 (other quality classes on request)
- Shell: Steel tin plated

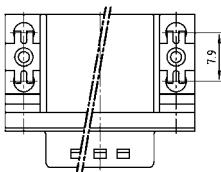
PRODUCT DRAWING



No. of pos.	A	B1	B2	C
2X 09	30.80	16.30	16.92	25.00
2X 15	39.20	24.60	25.25	33.30
2X 25	53.10	38.30	38.96	47.04
2X 37	69.40	54.80	55.42	63.50

Graphically representation of only one variant!

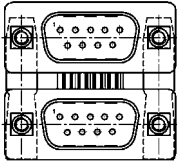
Mounting style: PCB clip, threaded insert



D-SUB STANDARD – DUAL PORT VARIATIONS

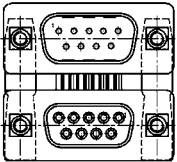
Solder pin – Angled – Stamped contacts – .750" / 19.05 mm Connector spacing

ORDER DATA



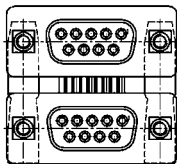
No. of pos.	Mounting style 4-40 UNC	Part Number
09 / 09	PCB clip/Threaded insert	DLS 1PP5AN23 X
15 / 15	PCB clip/Threaded insert	DLS 2PP5AN23 X
25 / 25	PCB clip/Threaded insert	DLS 3PP5AN23 X
37 / 37	PCB clip/Threaded insert	DLS 4PP5AN23 X

Variation:
plug upper –
plug bottom



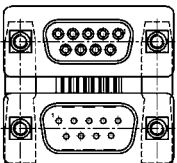
No. of pos.	Mounting style 4-40 UNC	Part Number
09 / 09	PCB clip/Threaded insert	DLS 1PS5AN23 X
15 / 15	PCB clip/Threaded insert	DLS 2PS5AN23 X
25 / 25	PCB clip/Threaded insert	DLS 3PS5AN23 X
37 / 37	PCB clip/Threaded insert	DLS 4PS5AN23 X

Variation:
plug upper –
socket bottom



No. of pos.	Mounting style 4-40 UNC	Part Number
09 / 09	PCB clip/Threaded insert	DLS 1SS5AN23 X
15 / 15	PCB clip/Threaded insert	DLS 2SS5AN23 X
25 / 25	PCB clip/Threaded insert	DLS 3SS5AN23 X
37 / 37	PCB clip/Threaded insert	DLS 4SS5AN23 X

Variation:
socket upper –
socket bottom



No. of pos.	Mounting style 4-40 UNC	Part Number
09 / 09	PCB clip/Threaded insert	DLS 1SP5AN23 X
15 / 15	PCB clip/Threaded insert	DLS 2SP5AN23 X
25 / 25	PCB clip/Threaded insert	DLS 3SP5AN23 X
37 / 37	PCB clip/Threaded insert	DLS 4SP5AN23 X

PCB clip .122" / 3.1 ± .004" / 0.10 mm hole diameter and .063" / 1.6 mm circuit board thickness

Variation:
socket upper –
plug bottom