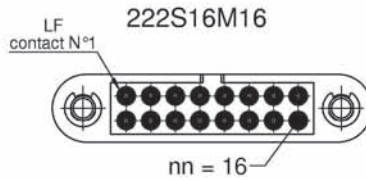
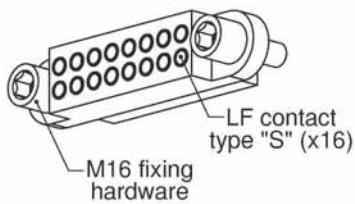
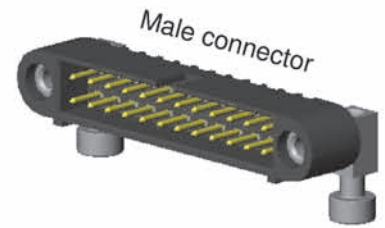
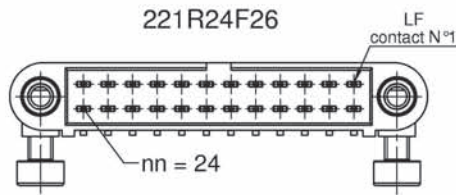
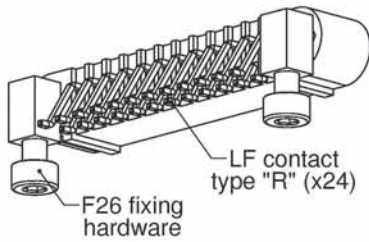


# CMM 220 with LF contacts

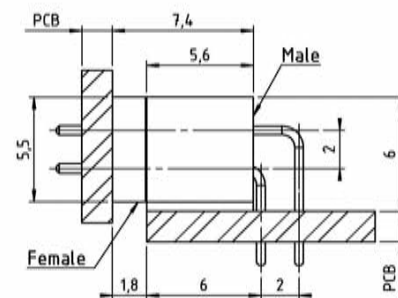
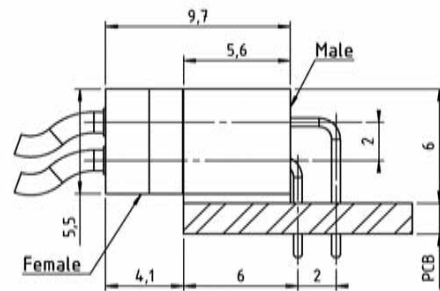
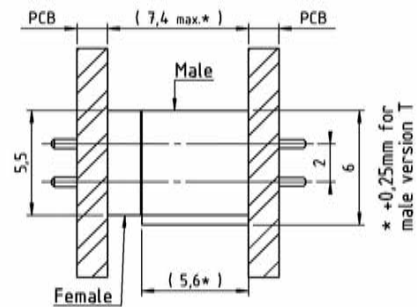
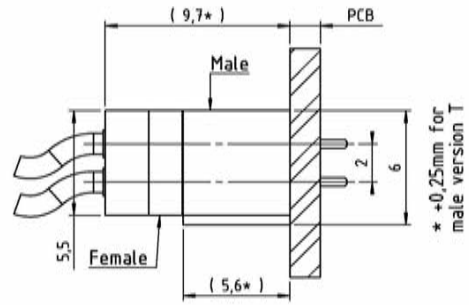
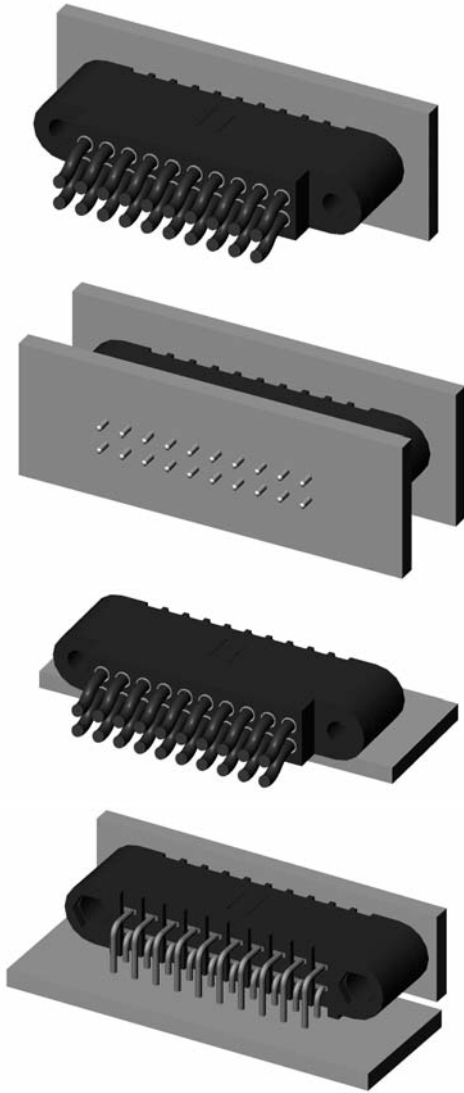


## PART NUMBERING REMINDER

Code with Low Frequency contacts only					
Series	Gender	Termination Style	Number of LF contacts	Fixing Hardware	
■ ■	■	■	n n	■ ■	
2 rows	22	1 male	Refer to table on page 7	04 to 60	Refer to pages 43, 44, 45
		2 female			

# CMM 220 Configuration

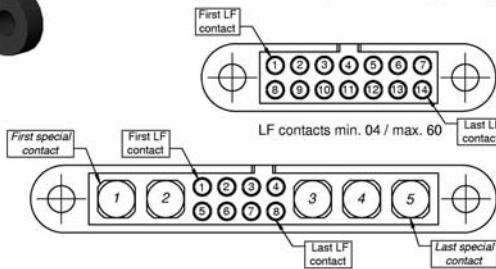
## CONNECTOR SPACING



## CONTACTS POSITIONS



Female connectors  
( shown looking onto mating face )

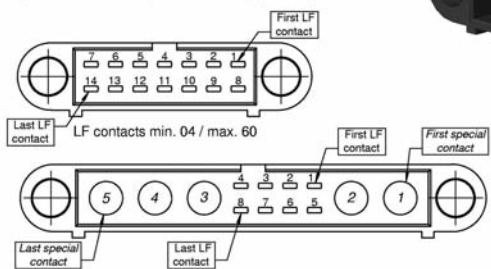


Mixed layout max. configuration depends on the total LF contacts number

Special contacts min. 02 / max. 15



Male connectors  
( shown looking onto mating face )

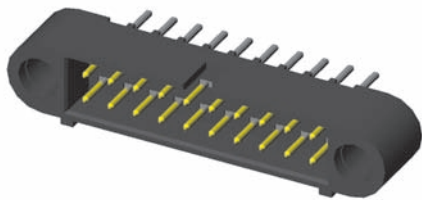


Mixed layout max. configuration depends on the total LF contacts number

Special contacts min. 02 / max. 15

# CMM 220 male

## STRAIGHT PCB



nn min = 04 nn max = 60

### Part numbering :

Type :Y-YL

2 2 | n n

See Fixing on page 43, 44  
"Fxx" without fixing

nn = number of LF contacts

Type	L
Y	3
YL	4,5

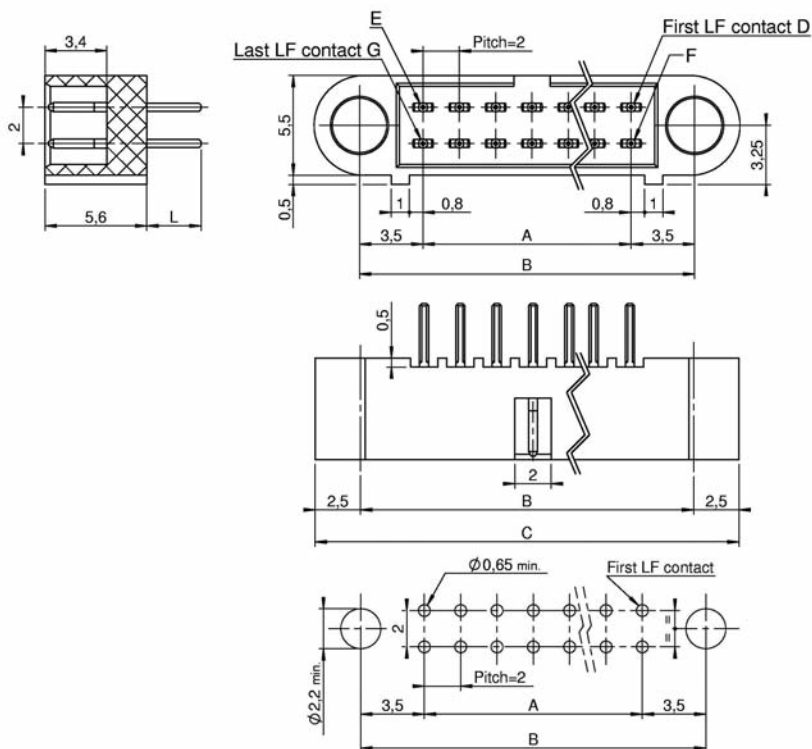
### Calculation :

$$A = nn - 2$$

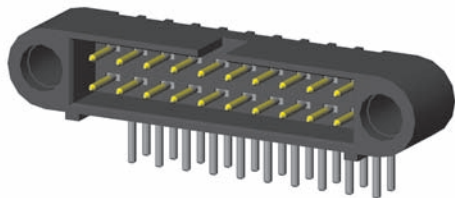
$$B = A + 7$$

$$C = A + 12$$

Refer to dimension table on cover page



## 90° PCB



nn min = 04 nn max = 60

### Part numbering :

Type :V-VL

2 2 | n n

See Fixing on page 43, 44  
"Fxx" without fixing

nn = number of LF contacts

Type	L
V	3
VL	4,5

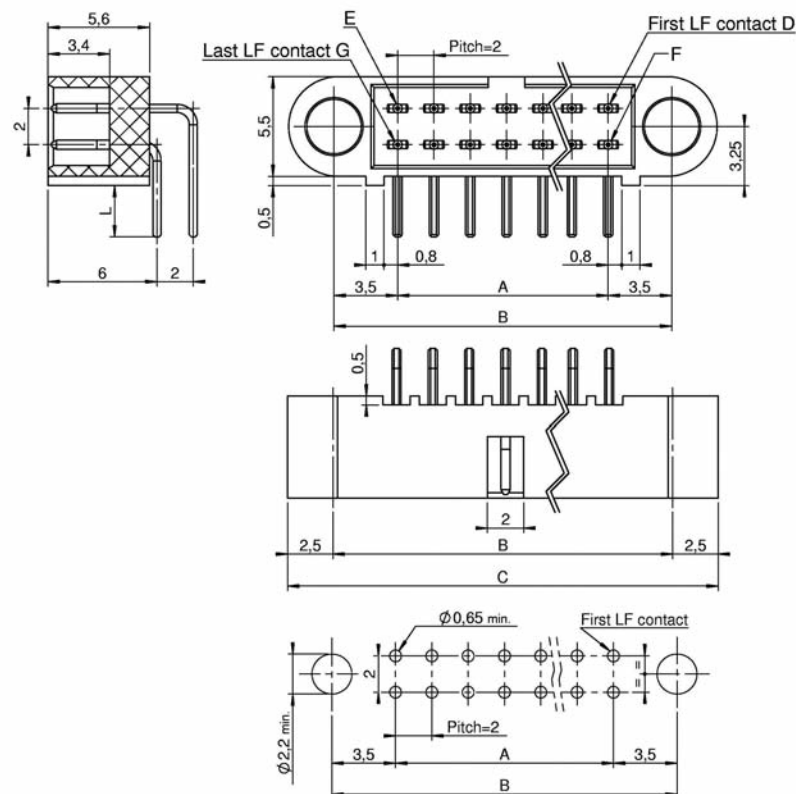
### Calculation :

$$A = nn - 2$$

$$B = A + 7$$

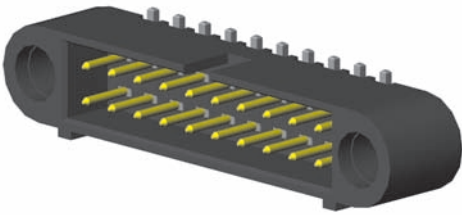
$$C = A + 12$$

Refer to dimension table on cover page



# CMM 220 male

## STRAIGHT SMT



nn min = 04 nn max = 60

### Part numbering :

Type : T-TL

2 2 1 n n

See Fixing on page 43, 44  
"Fxx" without fixing

nn = number of LF contacts

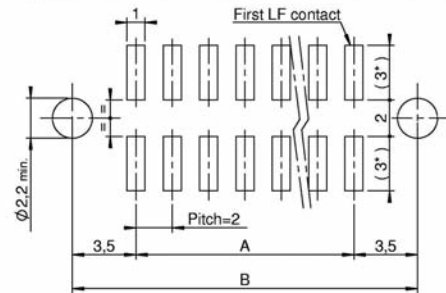
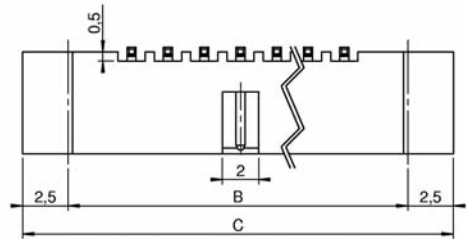
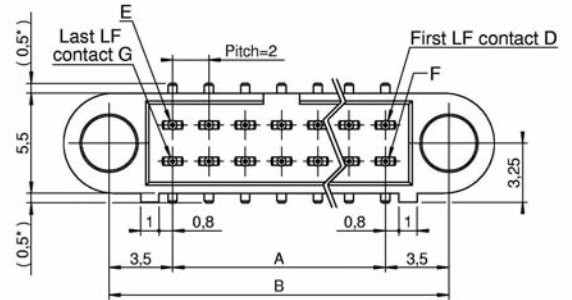
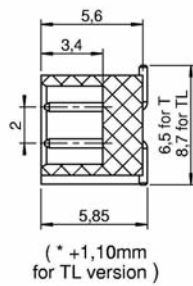
### Calculation :

$$A = nn - 2$$

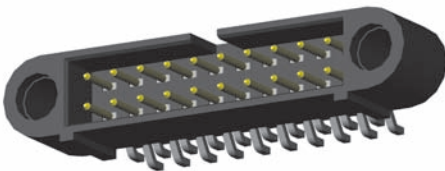
$$B = A + 7$$

$$C = A + 12$$

Refer to dimension table on cover page



## 90° SMT



nn min = 04 nn max = 60

### Part numbering :

2 2 1 R n n

See Fixing on page 43, 44  
"Fxx" without fixing

nn = number of LF contacts

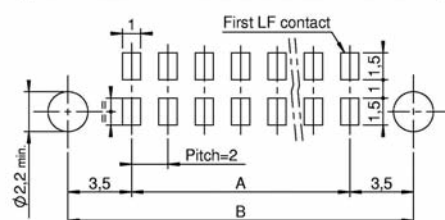
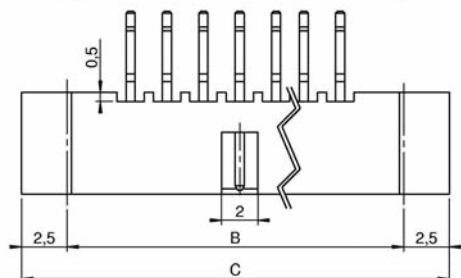
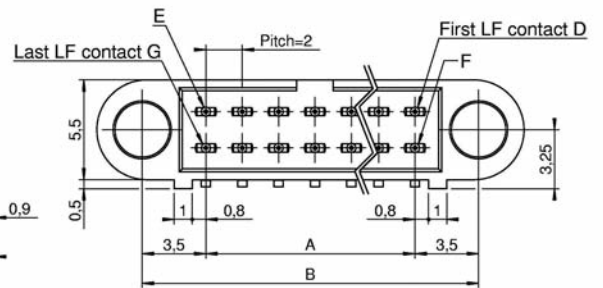
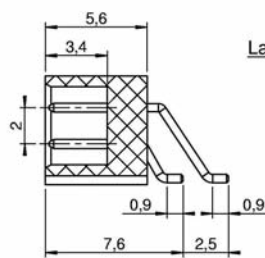
### Calculation :

$$A = nn - 2$$

$$B = A + 7$$

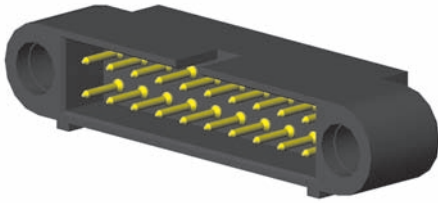
$$C = A + 12$$

Refer to dimension table on cover page



# CMM 220 male

## CRIMP



nn min = 04 nn max = 60

### Part numbering :

Type : S-C

2 2 | n n

See Fixing on page 43, 44  
"Fxx" without fixing

nn = number of LF contacts

Type	Gauge
S	24-28
C	22

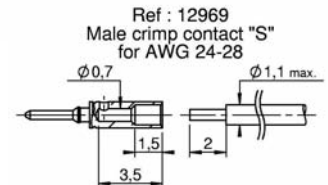
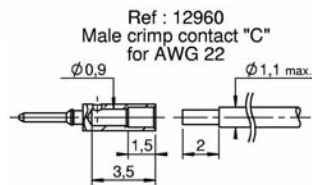
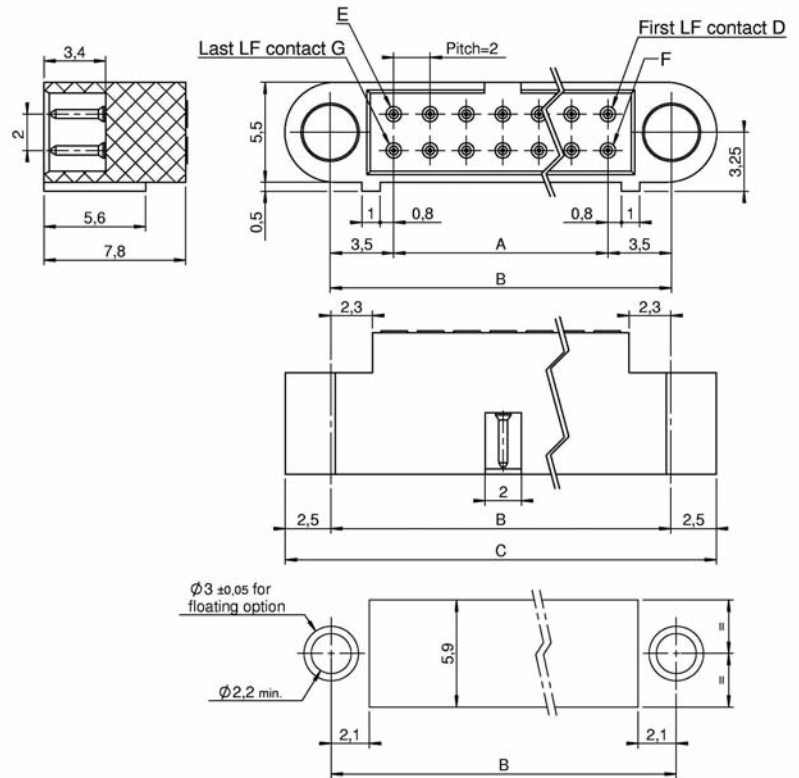
### Calculation :

$$A = nn - 2$$

$$B = A + 7$$

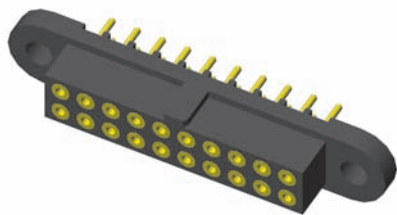
$$C = A + 12$$

Refer to dimension table on cover page



# CMM 220 female

## STRAIGHT PCB



nn min = 04 nn max = 60

### Part numbering :

Type :Y-YL

2 2 2 n n

See Fixing on page 45-46  
"Mxx" without fixing

nn = number of LF contacts

Type	L
Y	3
YL	4,5

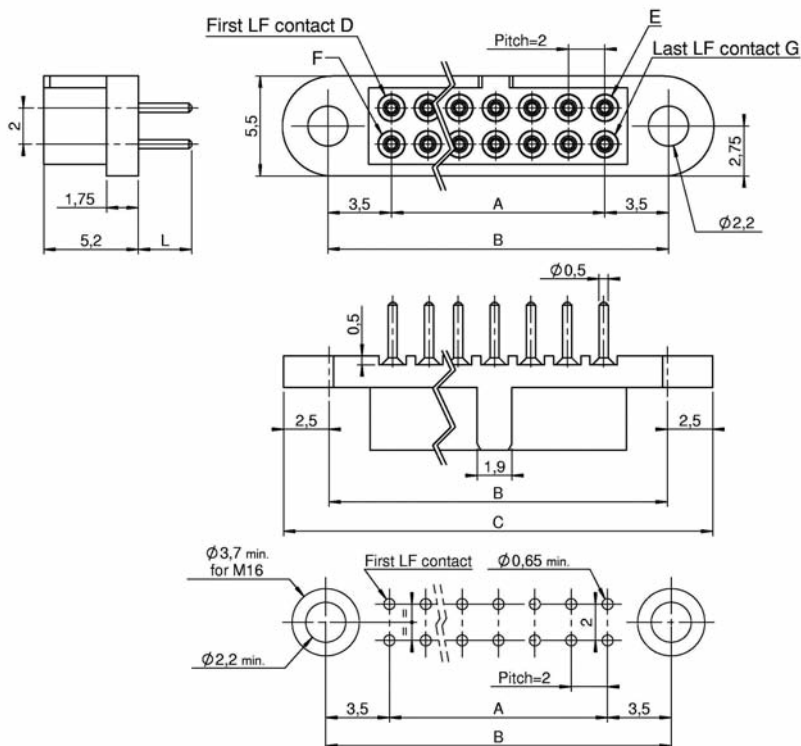
### Calculation :

$$A = nn - 2$$

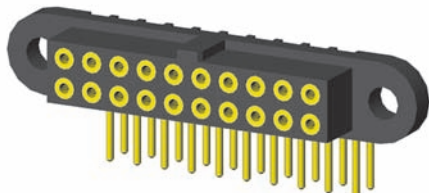
$$B = A + 7$$

$$C = A + 12$$

Refer to dimension table on cover page



## 90° PCB



nn min = 04 nn max = 60

### Part numbering :

Type :V-VL

2 2 2 n n

See Fixing on page 45  
"Mxx" without fixing

nn = number of LF contacts

Type	L
V	3
VL	4,5

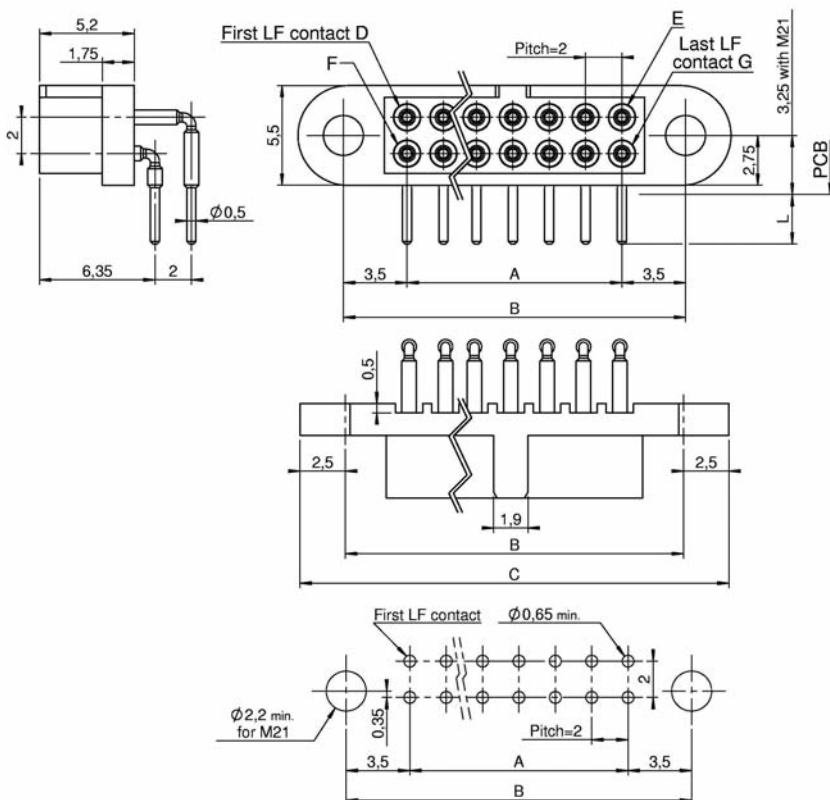
### Calculation :

$$A = nn - 2$$

$$B = A + 7$$

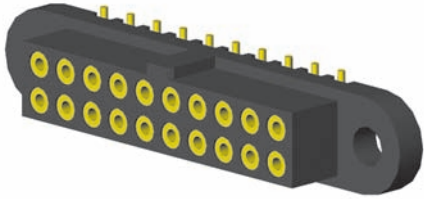
$$C = A + 12$$

Refer to dimension table on cover page



# CMM 220 female

## STRAIGHT SMT



nn min = 04 nn max = 60

### Part numbering :

Type : T-TL

2 2 2 n n

See Fixing on page 45-46  
"Mxx" without fixing

nn = number of LF contacts

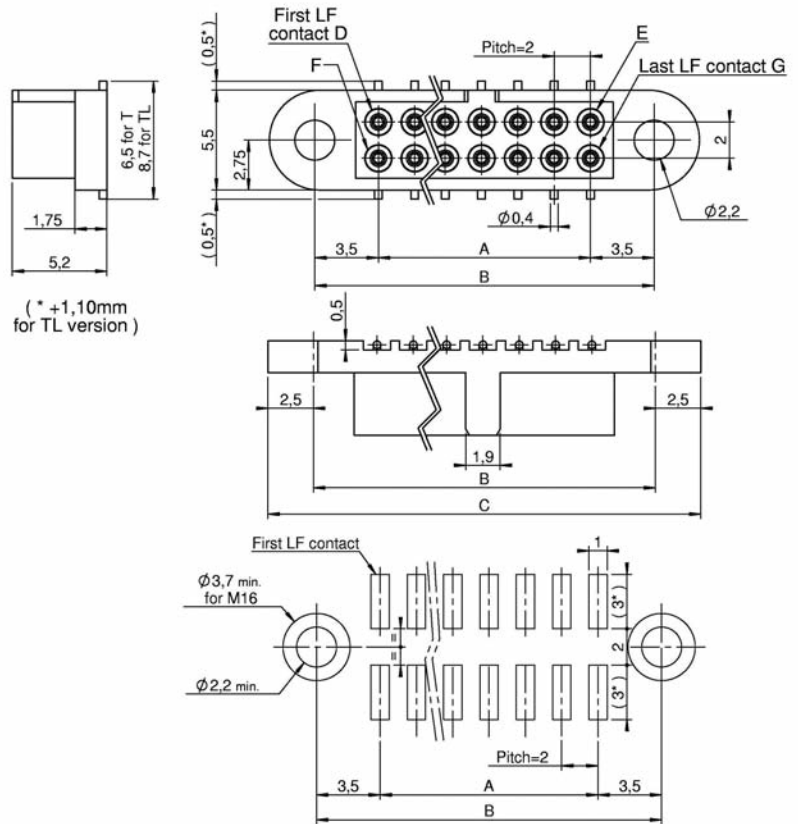
### Calculation :

$$A = nn - 2$$

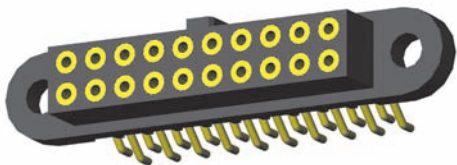
$$B = A + 7$$

$$C = A + 12$$

Refer to dimension table on cover page



## 90° SMT



nn min = 04 nn max = 60

### Part numbering :

2 2 2 R n n

See Fixing on page 45  
"Mxx" without fixing

nn = number of LF contacts

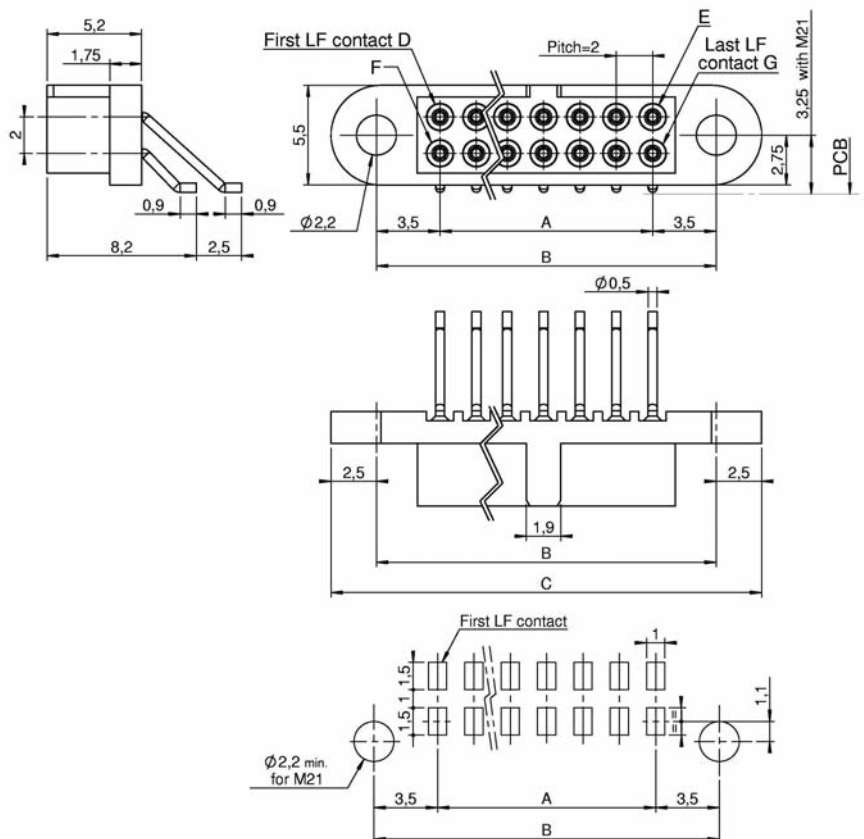
### Calculation :

$$A = nn - 2$$

$$B = A + 7$$

$$C = A + 12$$

Refer to dimension table on cover page



# CMM 220 female

## STRAIGHT PRESS FIT



nn min = 04 nn max = 60

### Part numbering :

2 2 2 PF n n

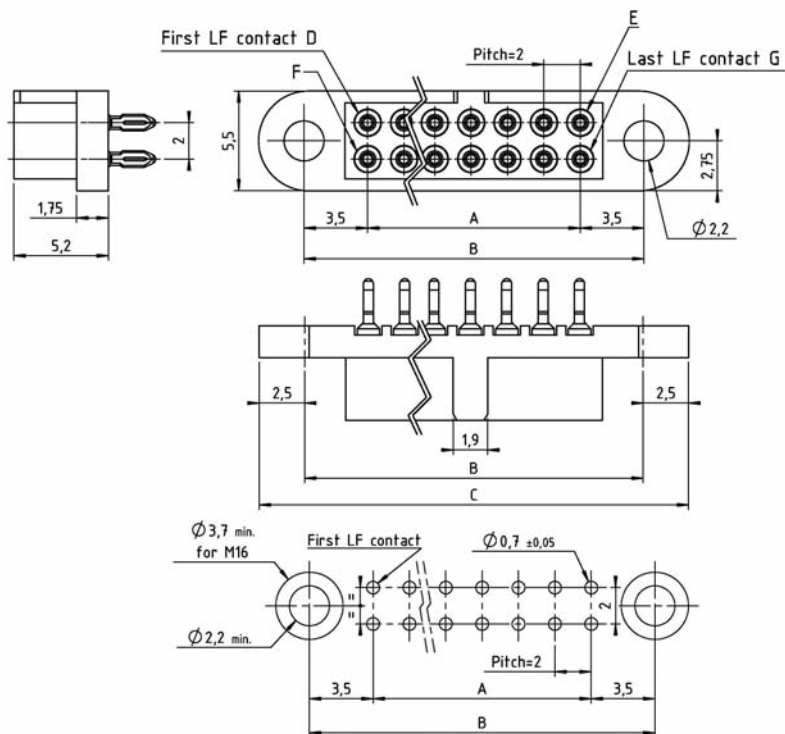
See Fixing on page 45-46  
"Mxx" without fixing

nn = number of LF contacts

### Calculation :

A	= nn - 2
B	= A + 7
C	= A + 12

Refer to dimension table on cover page



## CRIMP



nn min = 04 nn max = 60

### Part numbering :

Type : S-C

2 2 2 n n

See Fixing on page 45-46  
"Mxx" without fixing

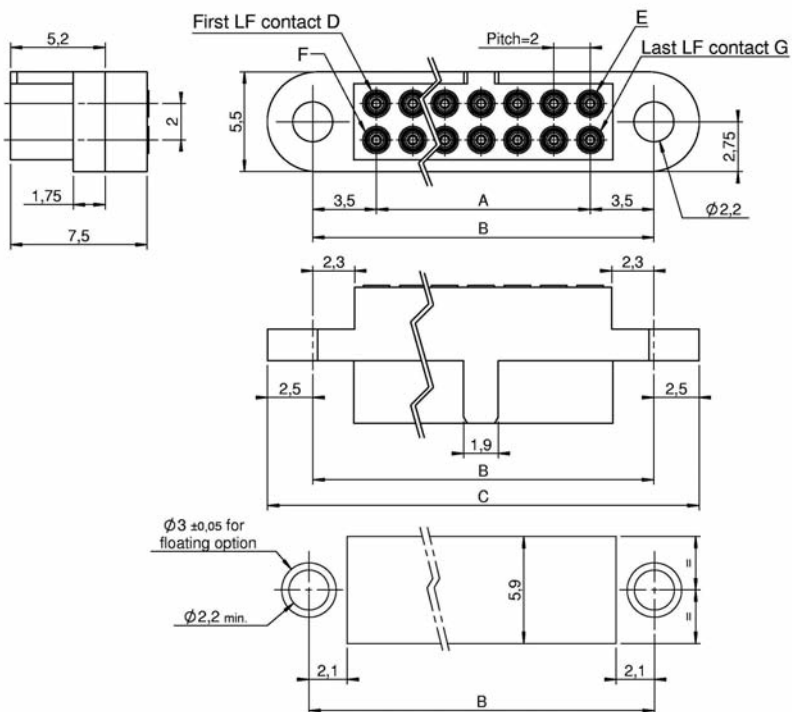
nn = number of LF contacts

Type	Gauge
S	24-28
C	22

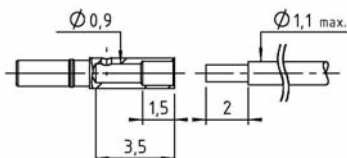
### Calculation :

A	= nn - 2
B	= A + 7
C	= A + 12

Refer to dimension table on cover page



Ref : C13064-P  
Female crimp contact "C"  
for AWG 22 cable



Ref : C12468  
Female crimp contact "S"  
for AWG 24-28

