

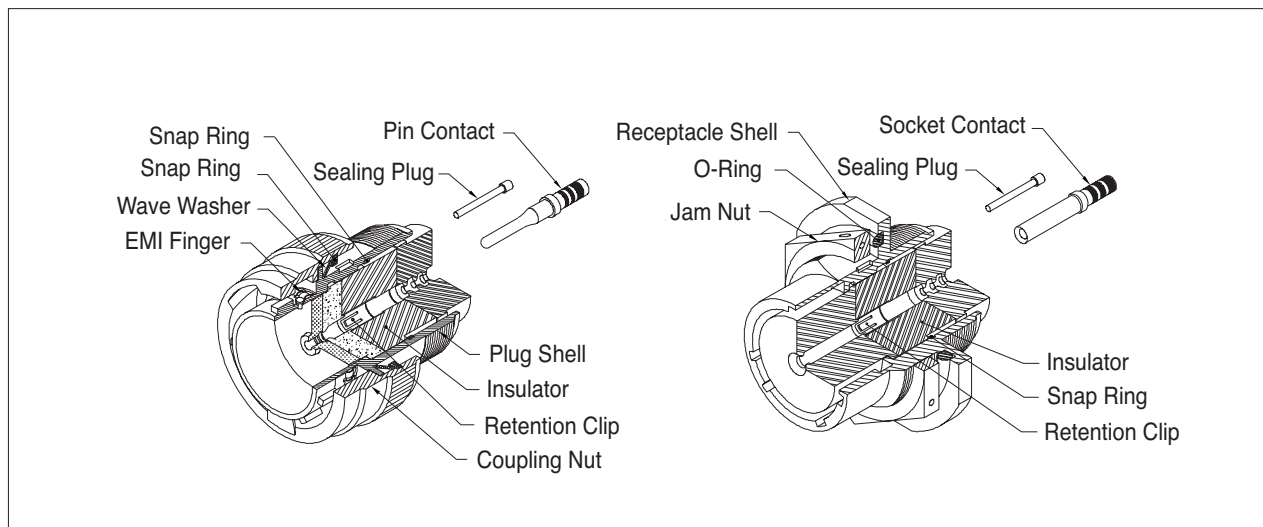
# MIL-C-26482 SERIES II



**IN2CONNECT**  
ELECTRONIC CONNECTORS

## ● Ordering Information

### • Sectioned View Connectors Rear Release Type



	<b>MS 3470 L 18 - 32 P W</b>
<b>SERIES PREFIX</b> _____	
<b>SHELL STYLE</b> _____	
<b>CLASS</b> _____	
<b>SIZE</b> _____	
<b>CONTACT ARRANGEMENT</b> _____	
<b>CONTACT TYPE</b> _____	
<b>ALTERNATE INSERT POSITION</b> _____	

#### CLASS

- A - Fluid resistant, 200 °C non-conductive (anodized)
- L - Fluid resistant, 200°C conductive, finish (nickel)
- W - Corrosive and fluid resistant, 175°C (cadmium over nickel)

#### SHELL SIZE

8, 10, 12, 14, 16, 18, 20, 22 and 24

#### CONTACT ARRANGEMENTS

See page 40

#### CONTACT TYPE

- P - Pin contact
- S - Socket contact

#### ALTERNATE INSERT POSITIONS

No designation required for normal position.  
Standard MS alternate positions available.

# MIL-C-26482 SERIES II



## ● Components And Specifications

### \*Receptacle



MS 3470



MS 3471



MS 3472

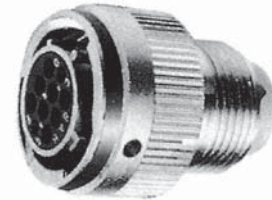


MS 3474

### \*Plug



MS 3475



MS 3476

## ● MIL-C-26482

Contact Rating	Contact Size	Rated Amps	Test Current	Millivolt Drop
	20		7.5	less than 55
	16		13.0	less than 50
	12		23.0	less than 50

## ● Voltage Rating

Altitude	Mated Service Rating	
	ft.	m
Sea level	-	1500
50	15,240	500
70	21,336	375
100	30,480	200

## ● Wire Range Accommodations

Contact Size	Solder Pot Diameter	AWG Wire Size	Conductor Cross Section Area
20	∅ 1.0	24.22 and 20	0.5mm max
16	∅ 1.6	20.18 and 16	1.25mm max
12	∅ 2.4	14 and 12	3.5mm max

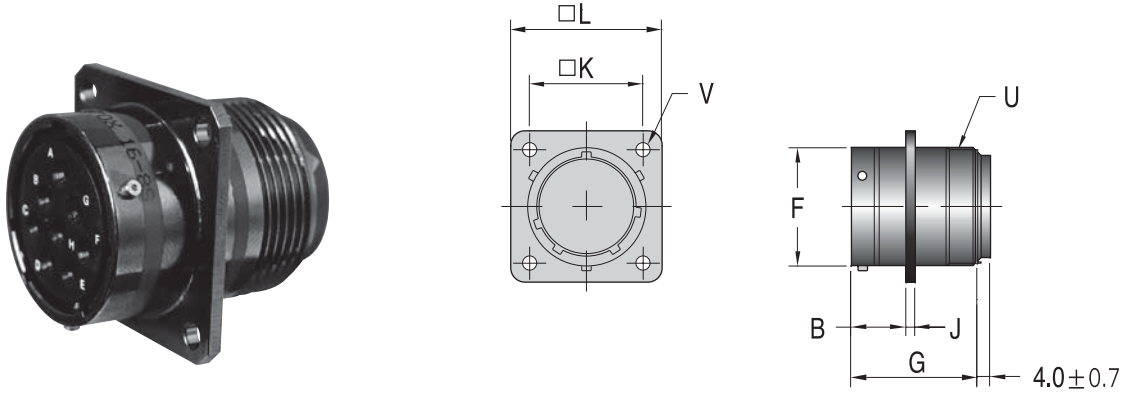
## ● Standard Materials & Finishes

Shell	Aluminiumally	Electroless Nickel Per MIL-C-26074, and anodized per MIL-A-8625 or olive drab cadmium over nickel
Insulators	Rigid dielectric	None
Elastomers (grommets, interfacial and "O" ring seals)	Silicone rubber or Fluorsilicon rubber	None
Contacts	Copper alloy	Gold plate
Coupling Nut	Aluminium alloy	Electroless nickel per MIL-C-2607 anodized per MIL-A-8525 or olive drab Cadmium over nickel or zinc over nickel
Jam Nut	Aluminium alloy	

# MIL-C-26482 SERIES II



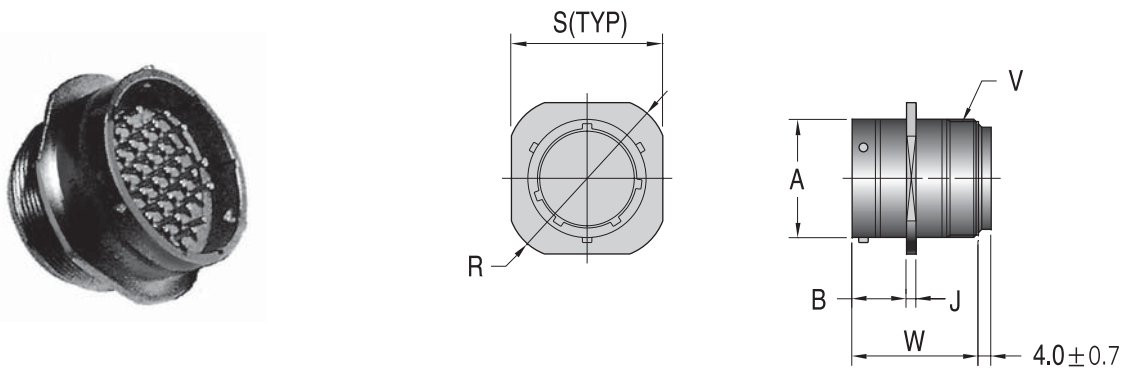
## ● MS3470 Narrow Flange Receptacle



Inch (mm)

Shell Size*	B Max.	F Max.	G Max.	J Max.	K	L	U Thread UNEF Class 2A	Ø V 4 HOLES
8	.462 (11.73)	.474(12.04)	1.215(30.85)	.078(1.98)	.594(15.09)	.828(21.03)	1/2-20	.115/.125(2.92/3.18)
10	.462 (11.73)	.594(15.01)	1.215(30.85)	.078(1.98)	.719(18.26)	.954(24.23)	5/8-24	.115/.125(2.92/3.18)
12	.462 (11.73)	.751(19.08)	1.215(30.85)	.078(1.98)	.812(20.62)	1.047(26.59)	3/4-20	.115/.125(2.92/3.18)
14	.462 (11.73)	.876(22.25)	1.215(30.85)	.078(1.98)	.906(23.01)	1.141(28.98)	7/8-20	.115/.125(2.92/3.18)
16	.462 (11.73)	1.001(25.43)	1.215(30.85)	.078(1.98)	.969(24.61)	1.234(31.34)	1-20	.115/.125(2.92/3.18)
18	.462 (11.73)	1.126(28.60)	1.215(30.85)	.078(1.98)	1.062(26.97)	1.328(33.73)	1-1/16-18	.115/.125(2.92/3.18)
20	.587 (14.91)	1.251(31.78)	1.275(32.40)	.110(2.79)	1.156(29.36)	1.453(36.91)	1-3/16-18	.115/.125(2.92/3.18)
22	.587 (14.91)	1.376(34.95)	1.275(32.40)	.110(2.79)	1.250(31.75)	1.578(40.08)	1-5/16-18	.115/.125(2.92/3.18)
24	.620 (15.75)	1.501(38.13)	1.275(32.40)	.110(2.79)	1.375(34.93)	1.703(43.26)	1-7/16-18	.142/.152(3.61/3.86)

## ● MS3471 Cable Connecting Receptacle



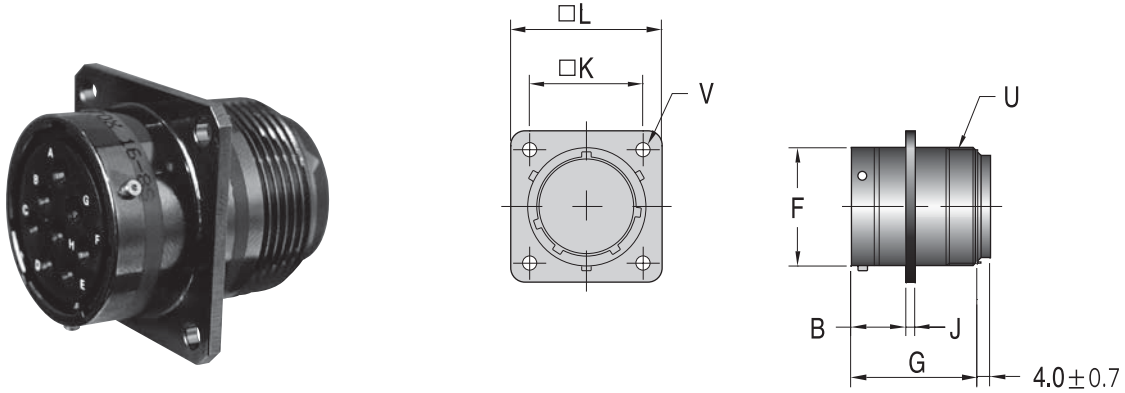
Inch (mm)

Shell Size	A Max.	B Max.	J Max.	R Dia. Max.	S Max.	W Max.	V Thread UNEF Class 2A
10	.591(15.01)	.462(11.73)	.078(1.98)	1.082(27.48)	.954(24.23)	1.251(30.86)	5/8-24
12	.751(19.08)	.462(11.73)	.078(1.98)	1.176(29.87)	1.047(26.59)	1.251(30.86)	3/4-20
14	.876(22.25)	.462(11.73)	.078(1.98)	1.270(32.26)	1.141(28.98)	1.251(30.86)	7/8-20
16	1.001(25.43)	.462(11.73)	.078(1.98)	1.364(34.64)	1.234(31.34)	1.251(30.86)	1-20
18	1.126(28.60)	.462(11.73)	.078(1.98)	1.458(37.03)	1.328(33.73)	1.251(30.86)	1-1/16-18
20	1.251(31.78)	.587(14.91)	.110(2.79)	1.708(43.38)	1.578(40.08)	1.251(32.38)	1-5/16-18
22	1.376(34.95)	.587(14.91)	.110(2.79)	1.708(43.38)	1.578(40.08)	1.251(32.38)	1-5/16-18
24	1.501(38.13)	.620(15.75)	.110(2.79)	1.832(46.53)	1.703(43.26)	1.251(32.38)	1-7/16-18

# MIL-C-26482 SERIES II



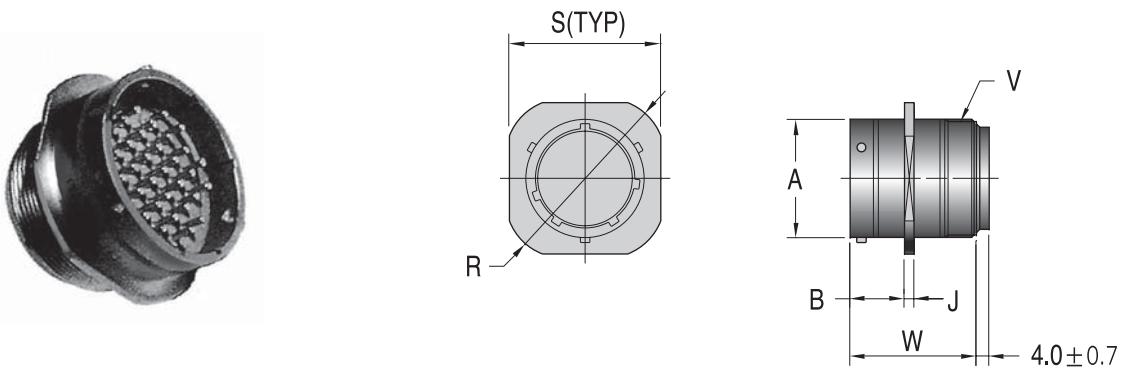
## ● MS3470 Narrow Flange Receptacle



Inch (mm)

Shell Size*	B Max.	F Max.	G Max.	J Max.	K	L	U Thread UNEF Class 2A	Ø V 4 HOLES
8	.462 (11.73)	.474(12.04)	1.215(30.85)	.078(1.98)	.594(15.09)	.828(21.03)	1/2-20	.115/.125(2.92/3.18)
10	.462 (11.73)	.594(15.01)	1.215(30.85)	.078(1.98)	.719(18.26)	.954(24.23)	5/8-24	.115/.125(2.92/3.18)
12	.462 (11.73)	.751(19.08)	1.215(30.85)	.078(1.98)	.812(20.62)	1.047(26.59)	3/4-20	.115/.125(2.92/3.18)
14	.462 (11.73)	.876(22.25)	1.215(30.85)	.078(1.98)	.906(23.01)	1.141(28.98)	7/8-20	.115/.125(2.92/3.18)
16	.462 (11.73)	1.001(25.43)	1.215(30.85)	.078(1.98)	.969(24.61)	1.234(31.34)	1-20	.115/.125(2.92/3.18)
18	.462 (11.73)	1.126(28.60)	1.215(30.85)	.078(1.98)	1.062(26.97)	1.328(33.73)	1-1/16-18	.115/.125(2.92/3.18)
20	.587 (14.91)	1.251(31.78)	1.275(32.40)	.110(2.79)	1.156(29.36)	1.453(36.91)	1-3/16-18	.115/.125(2.92/3.18)
22	.587 (14.91)	1.376(34.95)	1.275(32.40)	.110(2.79)	1.250(31.75)	1.578(40.08)	1-5/16-18	.115/.125(2.92/3.18)
24	.620 (15.75)	1.501(38.13)	1.275(32.40)	.110(2.79)	1.375(34.93)	1.703(43.26)	1-7/16-18	.142/.152(3.61/3.86)

## ● MS3471 Cable Connecting Receptacle



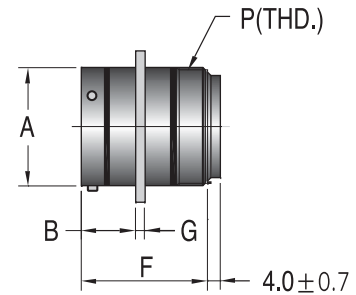
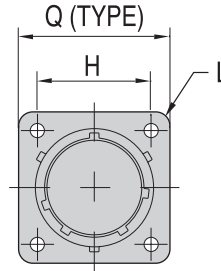
Inch (mm)

Shell Size	A Max.	B Max.	J Max.	R Dia. Max.	S Max.	W Max.	V Thread UNEF Class 2A
10	.591(15.01)	.462(11.73)	.078(1.98)	1.082(27.48)	.954(24.23)	1.251(30.86)	5/8-24
12	.751(19.08)	.462(11.73)	.078(1.98)	1.176(29.87)	1.047(26.59)	1.251(30.86)	3/4-20
14	.876(22.25)	.462(11.73)	.078(1.98)	1.270(32.26)	1.141(28.98)	1.251(30.86)	7/8-20
16	1.001(25.43)	.462(11.73)	.078(1.98)	1.364(34.64)	1.234(31.34)	1.251(30.86)	1-20
18	1.126(28.60)	.462(11.73)	.078(1.98)	1.458(37.03)	1.328(33.73)	1.251(30.86)	1-1/16-18
20	1.251(31.78)	.587(14.91)	.110(2.79)	1.708(43.38)	1.578(40.08)	1.251(32.38)	1-5/16-18
22	1.376(34.95)	.587(14.91)	.110(2.79)	1.708(43.38)	1.578(40.08)	1.251(32.38)	1-5/16-18
24	1.501(38.13)	.620(15.75)	.110(2.79)	1.832(46.53)	1.703(43.26)	1.251(32.38)	1-7/16-18

# MIL-C-26482 SERIES II



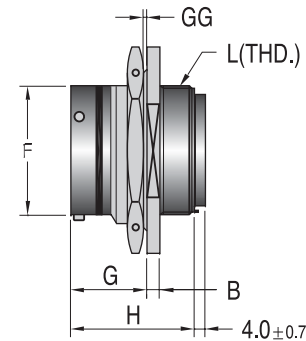
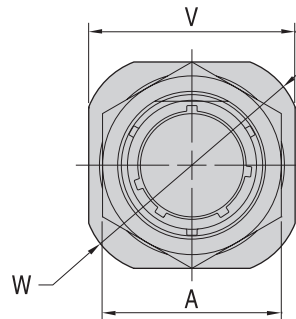
## ● MS3472 Wide Flange Receptacle



inch (mm)

Shell Size*	A Max.	B Max.	F Max.	G Max.	H Max.	Q Max.	P Thread UNEF Class-2A	Ø L 4 HOLES
10	.591(15.01)	.493(12.52)	1.215(30.85)	.078(1.98)	.812(20.62)	1.141(28.98)	5/8-24	.150 ± .005(3.81 ± 0.13)
12	.751(19.08)	.493(12.52)	1.215(30.85)	.078(1.98)	.938(23.83)	1.266(32.16)	3/4-20	.150 ± .005(3.81 ± 0.13)
14	.876(22.25)	.493(12.52)	1.215(30.85)	.078(1.98)	1.031(26.19)	1.360(34.54)	7/8-20	.150 ± .005(3.81 ± 0.13)
16	1.001(25.43)	.493(12.52)	1.215(30.85)	.078(1.98)	1.125(28.58)	1.453(36.91)	1-20	.150 ± .005(3.81 ± 0.13)
18	1.126(28.60)	.493(12.52)	1.215(30.85)	.078(1.98)	1.203(30.56)	1.532(38.91)	1-1/16-18	.150 ± .005(3.81 ± 0.13)
20	1.251(31.78)	.587(14.91)	1.275(32.40)	.110(1.98)	1.297(32.94)	1.688(42.88)	1-3/16-18	.150 ± .005(3.81 ± 0.13)
22	1.376(34.95)	.587(14.91)	1.275(32.40)	.110(1.98)	1.375(34.93)	1.766(44.86)	1-5/16-18	.150 ± .005(3.81 ± 0.13)
24	1.501(38.13)	.620(15.75)	1.275(32.40)	.110(1.98)	1.500(38.10)	1.891(48.03)	1-7/16-18	.150 ± .005(3.81 ± 0.13)

## ● MS3474 Jam Nut Receptacle



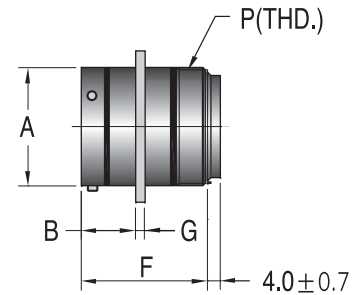
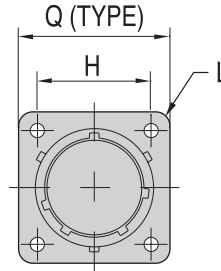
inch (mm)

Shell Size	V Max.	A Max.	B Max.	F Max.	G Max.	GG panel Thickness	H Max.	W Dia. Max.	L Thread UNEF Class-2A
8	.954(24.23)	.767(19.48)	.113(2.87)	.474(12.04)	.707(17.96)	.187/.062(4.75/1.57)	1.215(30.86)	1.078(27.38)	1/2-20
10	1.078(27.38)	.892(22.66)	.113(2.87)	.591(15.01)	.707(17.96)	.187/.062(4.75/1.57)	1.215(30.85)	1.203(30.56)	5/8-24
12	1.266(32.16)	1.079(27.41)	.113(2.87)	.751(19.08)	.707(17.96)	.187/.062(4.75/1.57)	1.215(30.85)	1.391(35.33)	3/4-20
14	1.391(35.33)	1.205(30.61)	.113(2.87)	.876(22.25)	.707(17.96)	.187/.062(4.75/1.57)	1.215(30.85)	1.516(38.51)	7/8-20
16	1.516(38.51)	1.329(33.76)	.113(2.87)	1.001(25.43)	.707(17.96)	.187/.062(4.75/1.57)	1.215(30.85)	1.641(41.68)	1-20
18	1.641(41.68)	1.455(36.96)	.113(2.87)	1.126(28.60)	.707(17.96)	.187/.062(4.75/1.57)	1.215(30.85)	1.766(44.86)	1-1/16-18
20	1.828(46.43)	1.579(40.11)	.148(3.76)	1.251(31.78)	.772(19.61)	.250/.062(6.35/1.57)	1.275(32.40)	1.954(49.63)	1-3/16-18
22	1.954(49.63)	1.705(40.11)	.148(3.76)	1.376(34.95)	.772(19.61)	.250/.062(6.35/1.57)	1.275(32.40)	2.078(52.78)	1-5/16-18
24	2.078(52.78)	1.829(46.46)	.148(3.76)	1.501(38.13)	.772(19.61)	.219/.062(5.56/1.57)	1.275(32.40)	2.203(55.96)	1-7/16-18

# MIL-C-26482 SERIES II



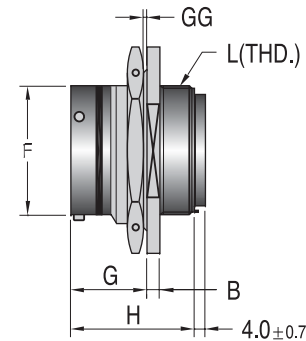
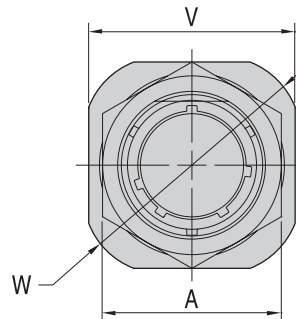
## ● MS3472 Wide Flange Receptacle



inch (mm)

Shell Size*	A Max.	B Max.	F Max.	G Max.	H Max.	Q Max.	P Thread UNEF Class-2A	Ø L 4 HOLES
10	.591(15.01)	.493(12.52)	1.215(30.85)	.078(1.98)	.812(20.62)	1.141(28.98)	5/8-24	.150 ± .005(3.81 ± 0.13)
12	.751(19.08)	.493(12.52)	1.215(30.85)	.078(1.98)	.938(23.83)	1.266(32.16)	3/4-20	.150 ± .005(3.81 ± 0.13)
14	.876(22.25)	.493(12.52)	1.215(30.85)	.078(1.98)	1.031(26.19)	1.360(34.54)	7/8-20	.150 ± .005(3.81 ± 0.13)
16	1.001(25.43)	.493(12.52)	1.215(30.85)	.078(1.98)	1.125(28.58)	1.453(36.91)	1-20	.150 ± .005(3.81 ± 0.13)
18	1.126(28.60)	.493(12.52)	1.215(30.85)	.078(1.98)	1.203(30.56)	1.532(38.91)	1-1/16-18	.150 ± .005(3.81 ± 0.13)
20	1.251(31.78)	.587(14.91)	1.275(32.40)	.110(1.98)	1.297(32.94)	1.688(42.88)	1-3/16-18	.150 ± .005(3.81 ± 0.13)
22	1.376(34.95)	.587(14.91)	1.275(32.40)	.110(1.98)	1.375(34.93)	1.766(44.86)	1-5/16-18	.150 ± .005(3.81 ± 0.13)
24	1.501(38.13)	.620(15.75)	1.275(32.40)	.110(1.98)	1.500(38.10)	1.891(48.03)	1-7/16-18	.150 ± .005(3.81 ± 0.13)

## ● MS3474 Jam Nut Receptacle



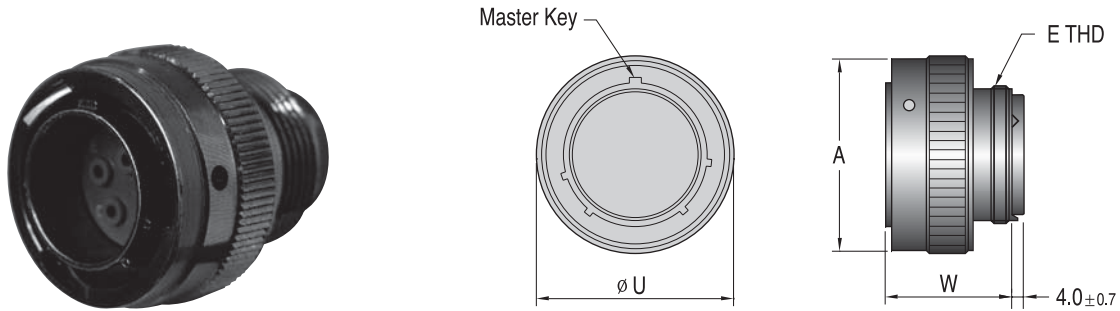
inch (mm)

Shell Size	V Max.	A Max.	B Max.	F Max.	G Max.	GG panel Thickness	H Max.	W Dia. Max.	L Thread UNEF Class-2A
8	.954(24.23)	.767(19.48)	.113(2.87)	.474(12.04)	.707(17.96)	.187/.062(4.75/1.57)	1.215(30.86)	1.078(27.38)	1/2-20
10	1.078(27.38)	.892(22.66)	.113(2.87)	.591(15.01)	.707(17.96)	.187/.062(4.75/1.57)	1.215(30.85)	1.203(30.56)	5/8-24
12	1.266(32.16)	1.079(27.41)	.113(2.87)	.751(19.08)	.707(17.96)	.187/.062(4.75/1.57)	1.215(30.85)	1.391(35.33)	3/4-20
14	1.391(35.33)	1.205(30.61)	.113(2.87)	.876(22.25)	.707(17.96)	.187/.062(4.75/1.57)	1.215(30.85)	1.516(38.51)	7/8-20
16	1.516(38.51)	1.329(33.76)	.113(2.87)	1.001(25.43)	.707(17.96)	.187/.062(4.75/1.57)	1.215(30.85)	1.641(41.68)	1-20
18	1.641(41.68)	1.455(36.96)	.113(2.87)	1.126(28.60)	.707(17.96)	.187/.062(4.75/1.57)	1.215(30.85)	1.766(44.86)	1-1/16-18
20	1.828(46.43)	1.579(40.11)	.148(3.76)	1.251(31.78)	.772(19.61)	.250/.062(6.35/1.57)	1.275(32.40)	1.954(49.63)	1-3/16-18
22	1.954(49.63)	1.705(40.11)	.148(3.76)	1.376(34.95)	.772(19.61)	.250/.062(6.35/1.57)	1.275(32.40)	2.078(52.78)	1-5/16-18
24	2.078(52.78)	1.829(46.46)	.148(3.76)	1.501(38.13)	.772(19.61)	.219/.062(5.56/1.57)	1.275(32.40)	2.203(55.96)	1-7/16-18

# MIL-C-26482 SERIES II



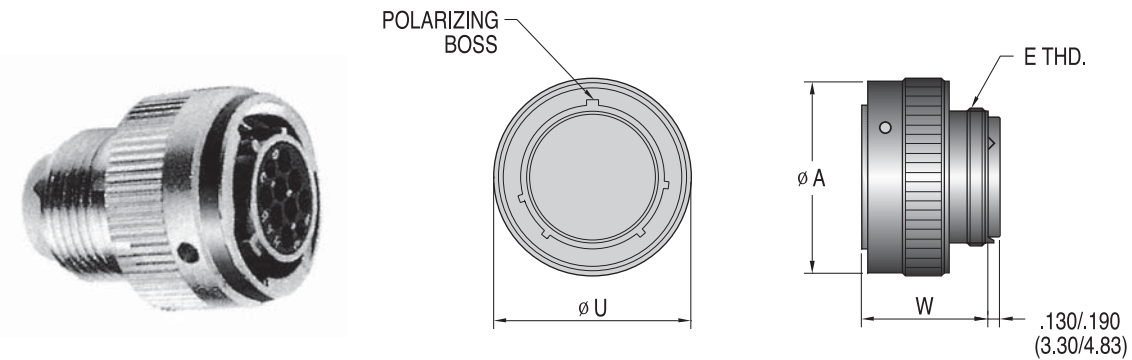
## ● MS3475 Straight Plug, RFI Shielded



Inch (mm)

Shell Size*	E Thread UNEF Class-2A	A Dia. Max.	U Max.	W Max.
10	5/8-24	.840(21.34)	.926(21.72)	1.230(31.24)
12	3/4-20	.999(25.37)	1.043(26.42)	1.230(31.24)
14	7/8-20	1.139(28.93)	1.183(29.97)	1.230(31.24)
16	1-20	1.261(32.03)	1.305(33.15)	1.230(31.24)
18	1-1/16-18	1.337(33.96)	1.391(35.33)	1.230(31.24)
20	1-3/16-18	1.477(37.52)	1.531(38.89)	1.230(31.24)
22	1-5/16-18	1.602(40.69)	1.656(42.06)	1.230(31.24)
24	1-7/16-18	1.723(43.76)	1.777(45.14)	1.230(31.24)

## ● MS3476 Straight Plug



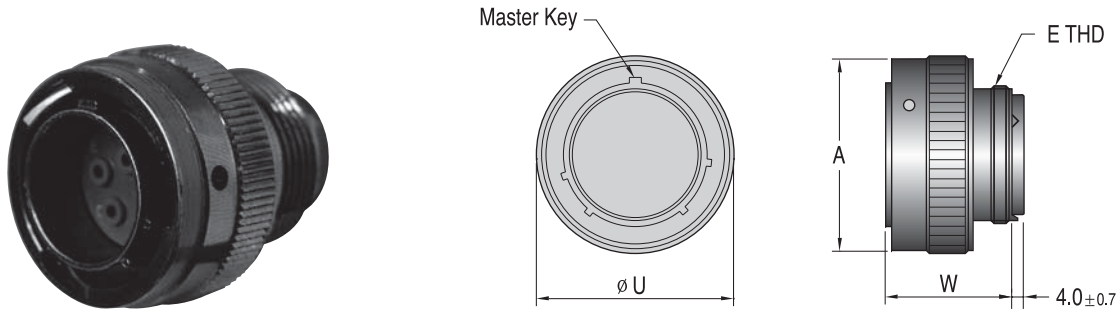
Inch (mm)

Shell Size	A Dia. Max.	U Max.	W Max.	E Thread UNEF Class 2A
8	.765(19.43)	.782(19.86)	1.230(31.24)	1/2-20
10	.840(21.34)	.926(23.52)	1.230(31.24)	5/8-24
12	.999(25.37)	1.043(26.49)	1.230(31.24)	3/4-20
14	1.139(28.93)	1.183(30.05)	1.230(31.24)	7/8-20
16	1.261(32.03)	1.305(33.15)	1.230(31.24)	1-20
18	1.337(33.96)	1.391(35.33)	1.230(31.24)	1-1/16-18
20	1.477(37.52)	1.531(38.89)	1.230(31.24)	1-3/16-18
22	1.602(40.69)	1.656(42.06)	1.230(31.24)	1-5/16-18
24	1.723(43.76)	1.777(45.14)	1.230(31.24)	1-7/16-18

# MIL-C-26482 SERIES II



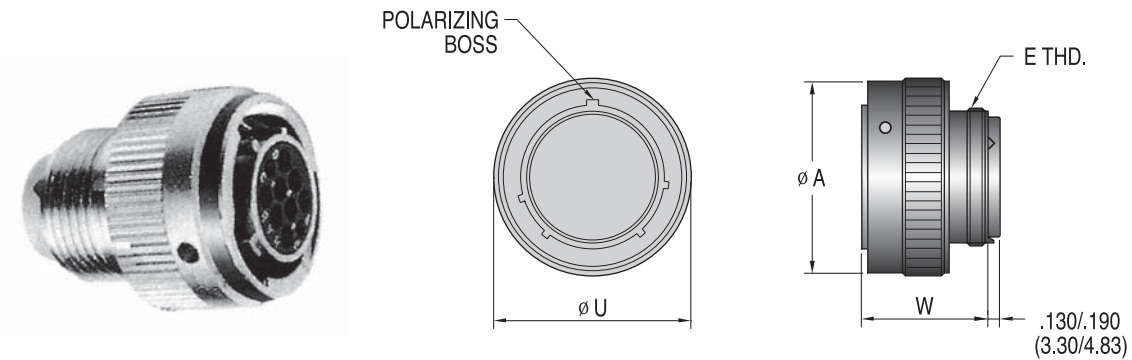
## ● MS3475 Straight Plug, RFI Shielded



Inch (mm)

Shell Size*	E Thread UNEF Class-2A	A Dia. Max.	U Max.	W Max.
10	5/8-24	.840(21.34)	.926(21.72)	1.230(31.24)
12	3/4-20	.999(25.37)	1.043(26.42)	1.230(31.24)
14	7/8-20	1.139(28.93)	1.183(29.97)	1.230(31.24)
16	1-20	1.261(32.03)	1.305(33.15)	1.230(31.24)
18	1-1/16-18	1.337(33.96)	1.391(35.33)	1.230(31.24)
20	1-3/16-18	1.477(37.52)	1.531(38.89)	1.230(31.24)
22	1-5/16-18	1.602(40.69)	1.656(42.06)	1.230(31.24)
24	1-7/16-18	1.723(43.76)	1.777(45.14)	1.230(31.24)

## ● MS3476 Straight Plug



Inch (mm)

Shell Size	A Dia. Max.	U Max.	W Max.	E Thread UNEF Class 2A
8	.765(19.43)	.782(19.86)	1.230(31.24)	1/2-20
10	.840(21.34)	.926(23.52)	1.230(31.24)	5/8-24
12	.999(25.37)	1.043(26.49)	1.230(31.24)	3/4-20
14	1.139(28.93)	1.183(30.05)	1.230(31.24)	7/8-20
16	1.261(32.03)	1.305(33.15)	1.230(31.24)	1-20
18	1.337(33.96)	1.391(35.33)	1.230(31.24)	1-1/16-18
20	1.477(37.52)	1.531(38.89)	1.230(31.24)	1-3/16-18
22	1.602(40.69)	1.656(42.06)	1.230(31.24)	1-5/16-18
24	1.723(43.76)	1.777(45.14)	1.230(31.24)	1-7/16-18

# MIL-C-26482 SERIES II



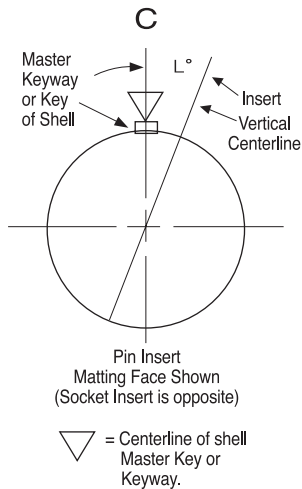
## ● Insert Arrangement & Clocking Positions (Per MIL-STD-1669)

### Polarization

#### Clocking positions

1. In the normal insert clocking position (position N), the insert centerline coincides with the centerline of the master key/keyway of the shell.

2. In the alternate insert clocking position (W, X, Y, Z), the pin insert is rotated clockwise relative to the centerline of the master key/keyway as indicated in the figure and chart. The socket insert is rotated counter-clockwise.



### Insert Arrangement and Clocking Positions (Per MIL-STD-1669)

Shell Size & Insert Arrangement	L Degrees					Shell Size & Insert Arrangement
	N°	W°	X°	Y°	Z°	
8-3	0	60	210	-	-	I
8-4	0	45	-	-	-	I
8-33	0	90	-	-	-	I
8-98	0	-	-	-	-	I
10-6	0	90	-	-	-	I
10-98	0	90	180	240	270	I
12-3	0	-	-	180	-	II
12-8	0	90	112	203	292	I
12-10	0	60	155	270	295	I
14-4	0	45	-	-	-	I
14-5	0	40	92	184	273	I
14-9	0	15	90	180	270	I
14-12	0	43	90	-	-	I
14-15	0	17	110	155	234	I
14-18	0	15	90	180	270	I
14-19	0	30	165	315	-	I
14-22	0	45	-	-	-	I
16-8	0	54	152	180	331	II
16-14	0	25	78	180	240	I
16-23	0	158	270	-	-	I
16-26	0	60	-	275	338	I
16-95	0	25	90	153	-	I
16-99	0	66	156	223	340	I
18-8	0	180	-	-	-	I
18-11	0	62	119	241	340	II
18-30	0	18	193	285	350	I
18-32	0	85	138	222	265	I
18-85	0	45	90	180	240	I
18-88	0	12	45	168	202	I
20-16	0	238	318	333	347	II
20-24	0	70	145	215	290	I
20-27	0	72	14	216	288	I
20-39	0	63	144	252	333	I
20-41	0	45	126	225	-	I
20-90	0	18	60	240	270	I
22-12	0	-	-	-	-	I
22-19	0	15	90	225	308	I
22-21	0	16	135	175	349	II
22-32	0	72	145	215	288	I
22-34	0	62	142	218	298	I
22-41	0	39	135	264	-	I
22-55	0	30	142	226	314	I
22-95	0	26	180	266	-	I
22-96	0	19	41	-	-	I
24-19	0	30	165	315	-	II
24-27	0	45	110	140	225	I
24-31	0	90	225	255	-	I
24-61	0	90	180	270	324	I

# MIL-C-26482 SERIES II



## ● Contact Arrangement

Insert Arrangements (per MIL-STD-1669)

Number identification example: **0833** (Insert arrangement No.)

**3#20** (Contact quantity and size)

**Note:** For service rating see table on page 37.



0803\*  
3 # 20

(MIL-C-83723  
Series I only  
Solder Contacts)



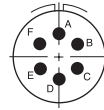
0804\*  
4 # 20



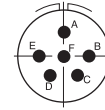
0833  
3 # 20



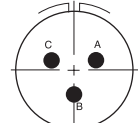
0898  
3 # 20



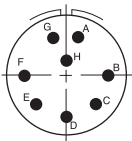
1006  
6 # 20



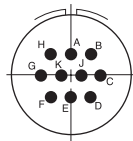
1098\*  
6 # 20



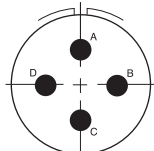
1203  
3 # 16



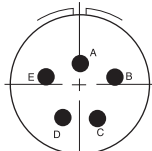
1208  
8 # 20



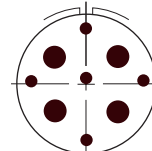
1210  
10 # 20



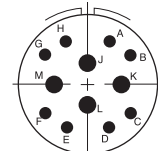
1404  
4 # 12



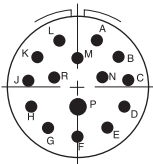
1405  
5 # 16



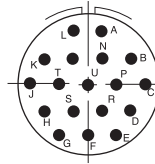
1409  
5 # 20, 4 # 12



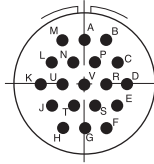
1412  
4 # 16, 8 # 20



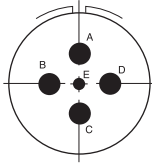
1415  
1 # 16, 14 # 20



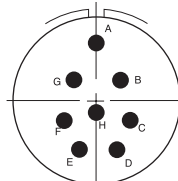
1418  
18 # 20



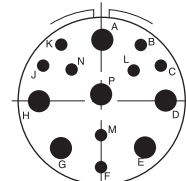
1419  
19 # 20



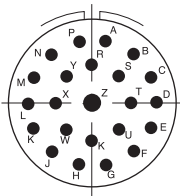
1422\*  
4 # 12, 1 # 20



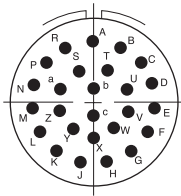
1608  
8 # 16



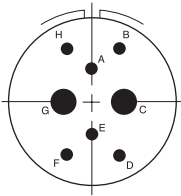
1614  
8 # 20, 6 # 12



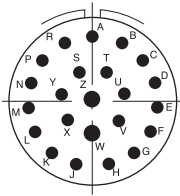
1623\*  
1 # 16, 22 # 20



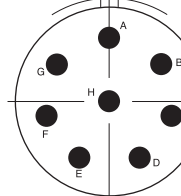
1626\*  
26 # 20



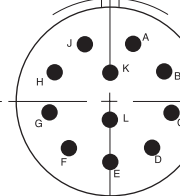
1695\*  
6 # 20, 2 # 8  
Shielded



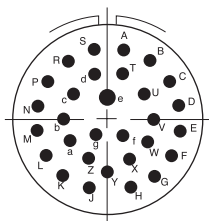
1699\*  
2 # 16, 21 # 20



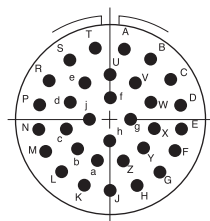
1808  
8 # 12



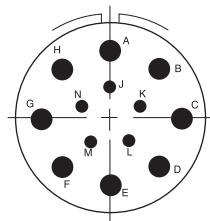
1811  
11 # 16



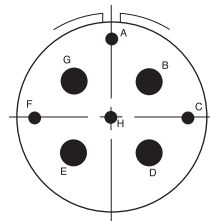
1630\*  
1 # 16, 29 # 20



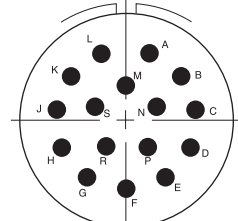
1832\*  
32 # 20



1885\*  
5 # 20, 8 # 12



1888\*  
4 # 20, 4 # 8  
Shielded

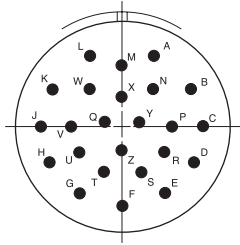


2016  
16 # 16

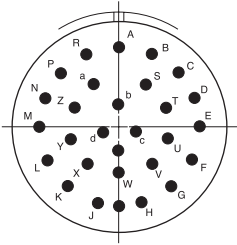
# MIL-C-26482 SERIES II



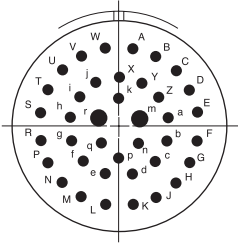
## ● Contact Arrangement (per MIL-STD-1669)



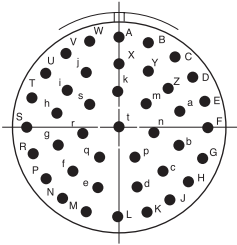
2024  
24 # 20



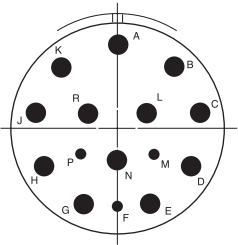
2027\*  
27 # 20



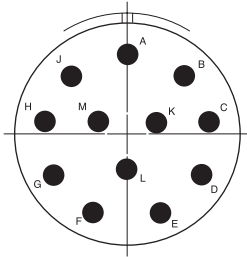
2039  
2 # 16, 37 # 20



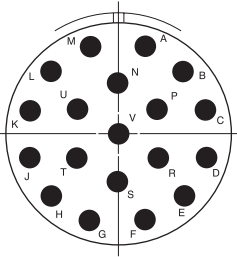
2041  
41 # 20



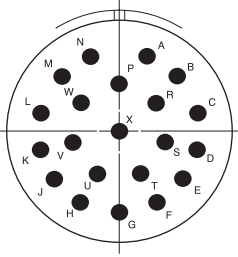
2090\*  
3 # 20, 12 # 12



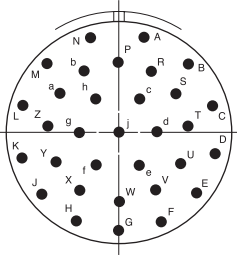
2212  
12 # 12



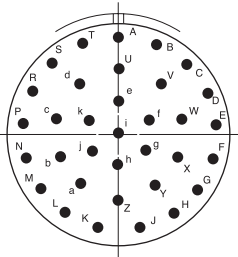
2219\*  
19 # 12



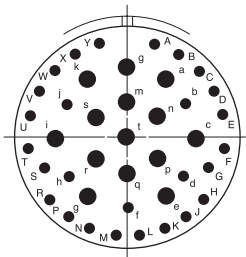
2221  
21 # 16



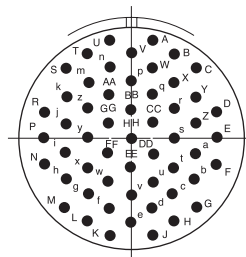
2232  
32 # 20



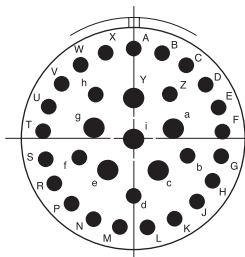
2234\*  
34 # 20



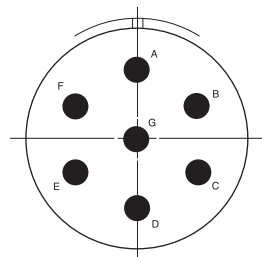
2241  
14 # 16, 27 # 20



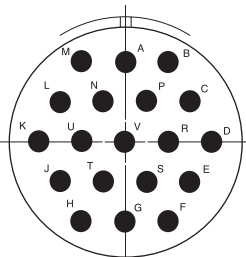
2255  
55 # 20



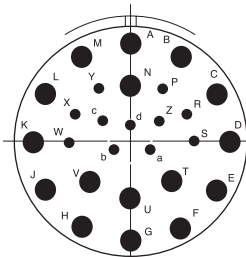
2295\*  
6 # 12, 26 # 20



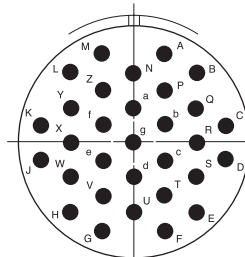
2296\*  
7 # 8 Shielded



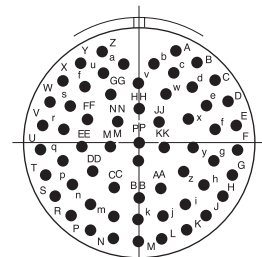
2419  
19 # 12



2427\*  
11 # 20, 16 # 12



2431  
31 # 16



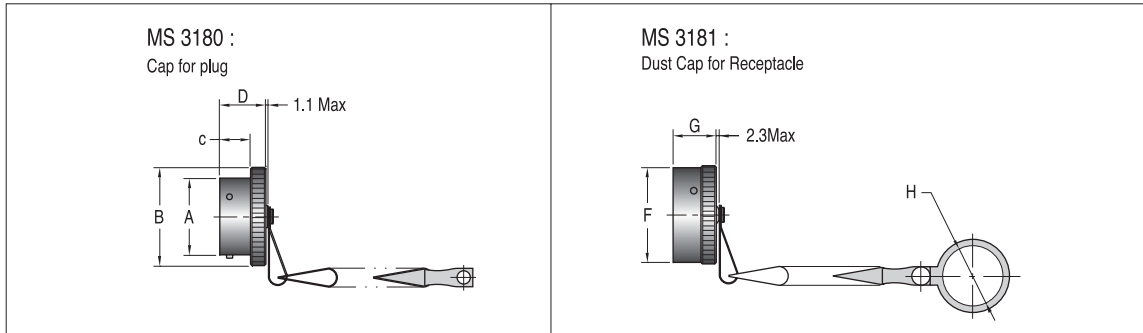
2461  
61 # 20

# MIL-C-26482 SERIES II



## ● Accessories

### • Protective Metal Cap



mm

Shell Size	∅ A +0.03 0.13	∅ B Max	C +0.25 -0.00	D Max	E +12.7 -6.35	∅ F Max	G Max	∅ H Min
8	12.01	18.26	9.35	14.27	76.2	18.64	14.27	14.68
10	14.99	21.44	9.35	14.27	76.2	21.82	14.27	17.86
12	19.05	25.40	9.35	14.27	88.9	25.40	14.27	22.63
14	22.22	28.58	9.35	14.27	88.9	28.58	14.27	25.81
16	25.40	31.75	9.35	14.27	88.9	31.75	14.27	28.98
18	28.58	34.92	9.35	14.27	88.9	34.92	14.27	32.16
20	31.75	38.10	10.92	15.88	101.6	38.10	14.27	35.33
22	34.92	41.28	10.92	15.88	101.6	41.28	14.27	38.51
24	38.10	44.45	11.76	16.71	101.6	44.45	15.29	41.68

## • Contacts, Sealing Plugs and Assembly Tools



Socket Contact



Pin Contact



Sealing Plug

Contact size	Wire Range		Socket Contacts		Pin Contacts		Sealing plugs	
	AWG	mm <sup>2</sup>	Military Part No.		Military Part No.		Military Part No.	
20	24-20	0.2-0.6	M39029/5-115		M39029/4-110		MS27488-20	
16	20-16	0.5-1.4	M39029/5-116		M39029/4-111		MS27488-16	
12	14-12	2-3	M39029/5-118		M39029/4-113		MS27488-12	

## • Crimping Tools

Contact size	Wire Range		Finished Wire Dia. Range		Crimping Tool	Turret or Positioner
	AWG	mm <sup>2</sup>	Inch	mm <sup>2</sup>		
20	24-20	0.2-0.6	.040-.083	1.02-2.11	M22520/1-01 or/2-01	M22520/1-02 or/2-02
16	20-16	0.5-1.4	.053-.103	1.34-2.62	M22520/1-01	M22520/1-02
12	14-12	2-3	.097-.158	2.46-4.01	M22520/1-01	M22520/1-02

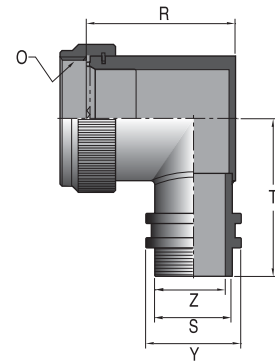
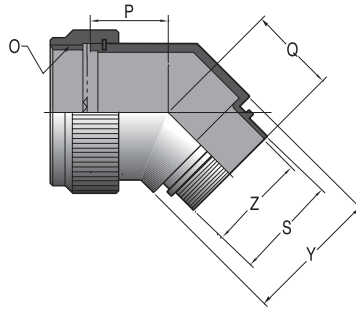
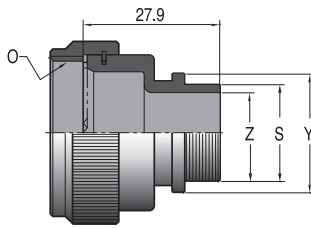
## • Insertion/Extraction Tools

Contact Size	Color Code	Military Part No.
20	Rd./Wh.	M81969/14-11
16	Bl./Wh.	M81969/14-03
12	Yel./Wh..	M81969/14-04

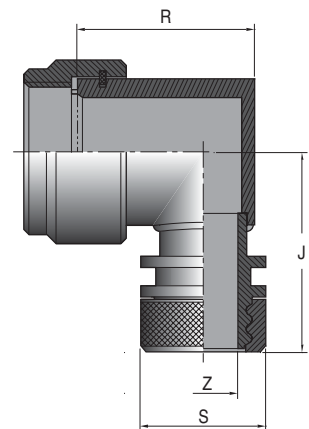
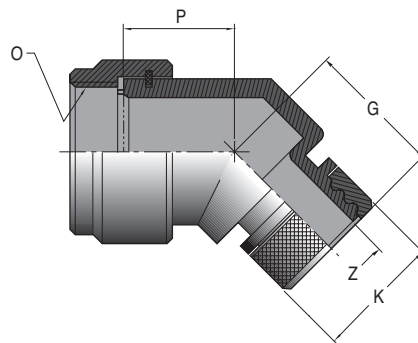
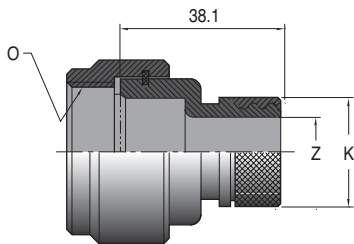
# MIL-C-26482 SERIES II



- Accessories
  - EMI, EMC Adapters



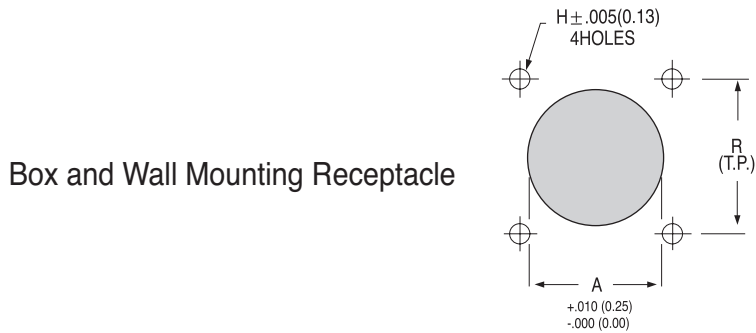
Shell Size	O Thread-2B	P	Q	T	Entry Size	Z	S	Y	R
8	1/2-20UNEF	19.1	23.1	27.9	04	6.3	9.5	14.0	28.4
10	5/8-20UNEF	19.6	23.6	29.5	05	7.9	11.1	15.5	30.2
12	3/4-20UNEF	20.3	24.1	31.0	06	9.5	12.7	17.1	31.8
14	7/8-20UNEF	20.8	24.6	32.5	07	11.0	14.3	18.7	33.3
16	1-20UNEF	21.3	25.4	34.3	08	12.7	15.9	20.3	35.1
18	1 1/16-18UNEF	21.8	25.7	35.6	10	15.8	19.1	23.5	38.1
20	1 3/16-18UNEF	22.4	26.4	37.1	12	19.0	22.2	26.7	41.1
22	1 5/16-18UNEF	23.1	26.9	38.9	14	22.2	25.4	29.8	44.5
24	1 7/16-18UNEF	23.6	27.7	40.4	16	25.4	28.6	33.0	47.8
					18	28.5	31.8	36.2	50.8
					20	31.7	34.9	39.4	53.8



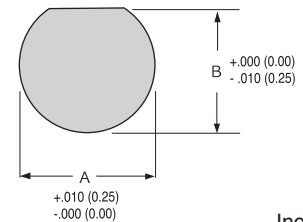
# MIL-C-26482 SERIES II



## • Panel Cutouts



Jam Nut Receptacle



Inch(mm)

Shell Size	A dia. - inches(mm)		R - inches(mm)	H ±.005	Screw*	A	B
	FRONT	REAR					
#8	.500(12.70)	.551(14.0)	.594(15.09)	.125(3.17)	#4	.578(14.68)	.540(13.72)
10	.630(16.00)	.669(17.0)	.719(18.26)	.125(3.17)	#4	.703(17.86)	.665(16.89)
12	.751(19.75)	.866(22.0)	.812(20.62)	.125(3.17)	#4	.890(22.61)	.828(21.02)
14	.876(22.25)	.984(25.0)	.906(23.01)	.125(3.17)	#4	1.015(25.78)	.952(24.18)
16	1.001(25.43)	1.102(28.0)	.969(24.61)	.125(3.17)	#4	1.140(28.96)	1.076(27.33)
18	1.126(28.60)	1.220(31.0)	1.062(26.97)	.125(3.17)	#4	1.265(32.13)	1.201(30.51)
20	1.251(31.78)	1.358(34.5)	1.156(29.36)	.125(3.17)	#4	1.390(35.31)	1.326(33.68)
22	1.376(34.95)	1.476(37.5)	1.250(31.75)	.125(3.17)	#4	1.515(38.48)	1.451(36.86)
24	1.501(38.13)	1.614(41.0)	1.375(34.92)	.155(3.94)	#6	1.640(41.66)	1.576(40.03)

Tel: +44 (0)1962 773004

Fax: +44 (0)1962 773104

[sales@in2connect.uk.com](mailto:sales@in2connect.uk.com)  
<[www.in2connect.uk.com](http://www.in2connect.uk.com)>