

MALE CONNECTORS

Outline Dimensions and Termination Styles



IN2CONNECT
ELECTRONIC CONNECTORS

Contact Pitch

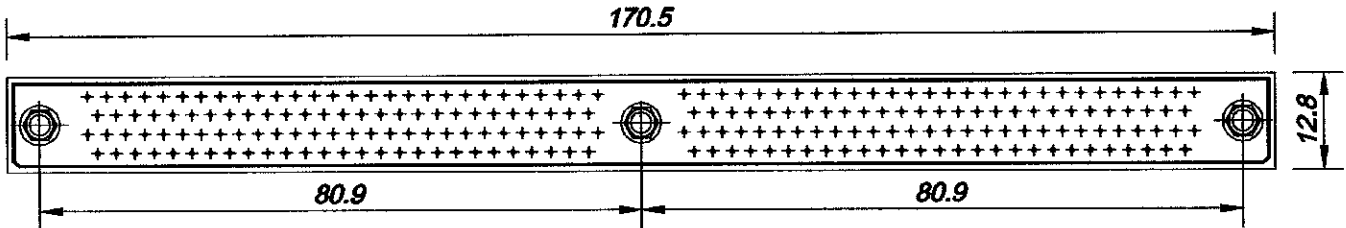
4 Rows

2.54mm between each row

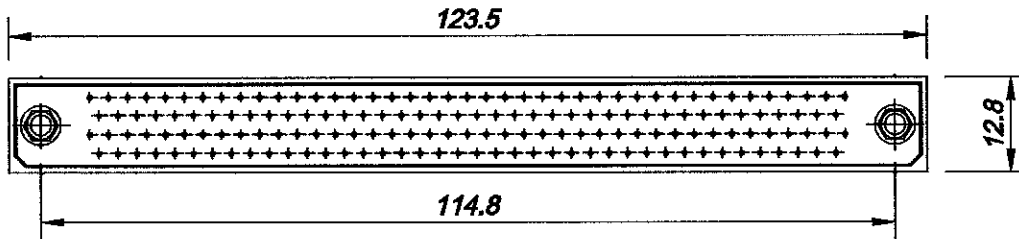
2.54mm between contacts

Adjacent rows of contacts offset 1.27mm

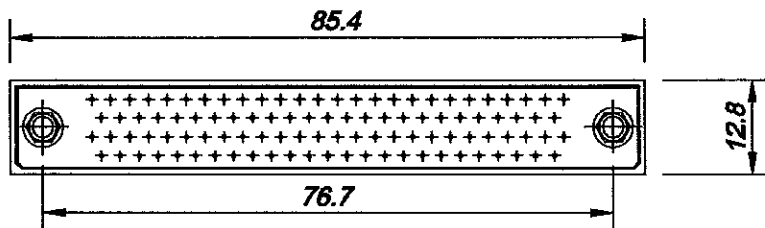
220 way



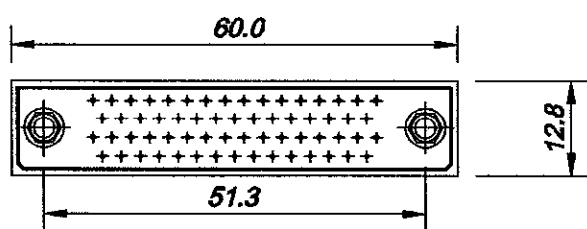
162 way



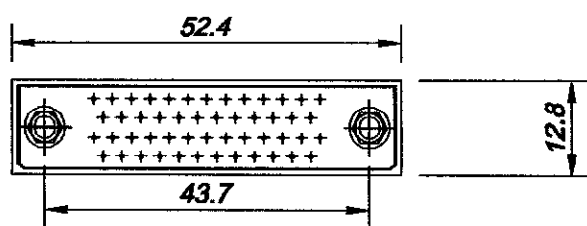
102 way



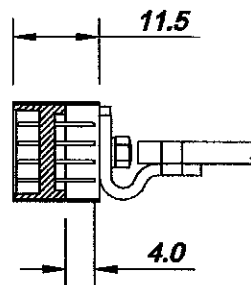
62 way



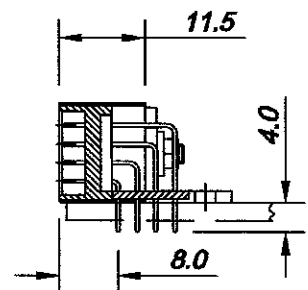
50 way



Connectors with terminations for flexible circuits



Connectors with 90° p.c. terminations



ITW **McMurdo**
Connectors

NORWAY ROAD, HILSEA, PORTSMOUTH,
HANTS, ENGLAND PO3 5HT
Tel: 01705 694971 Fax: 01705 653356/666352

FEMALE CONNECTORS

Outline Dimensions and Termination Styles

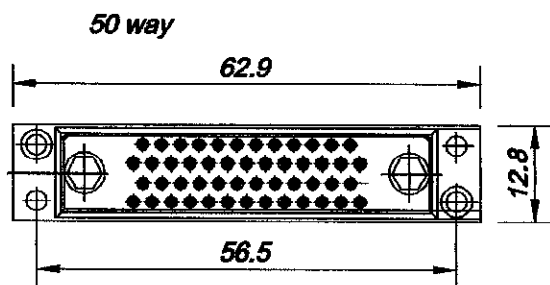
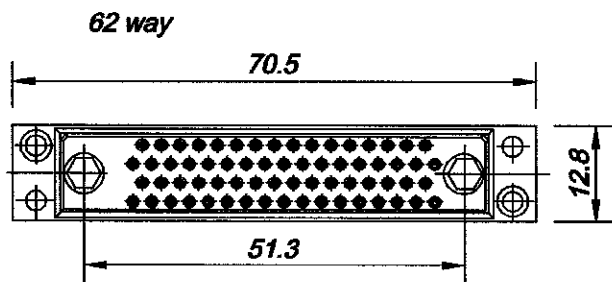
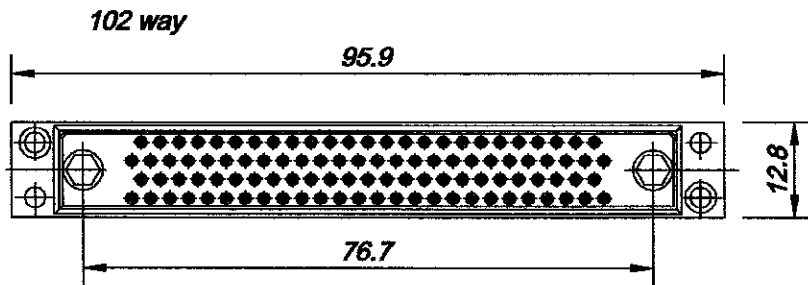
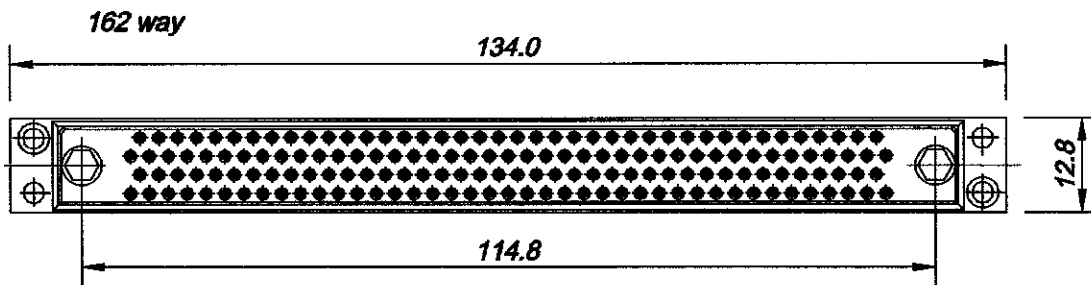
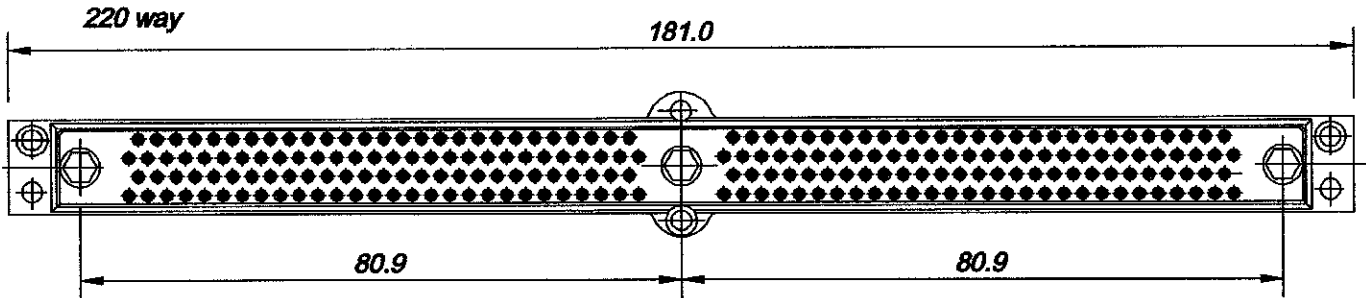
Contact Pitch

4 Rows

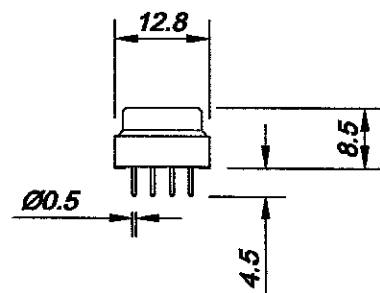
2.54mm between each row

2.54mm between contacts

Adjacent rows of contacts offset 1.27mm

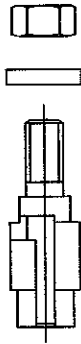


Connectors with straight p.c. terminations

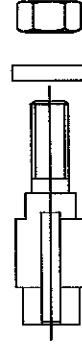


MALE CONNECTORS

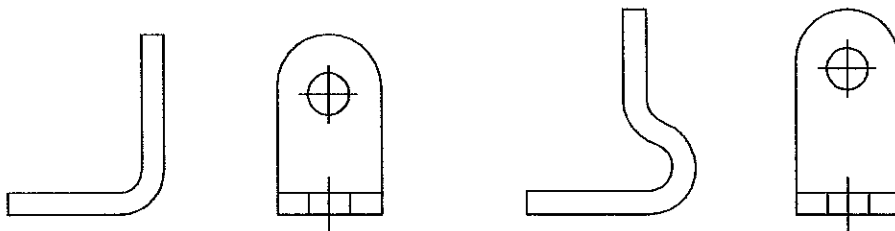
Fixing and Locking Accessories



Female Guide
90° Locking (Polarised)



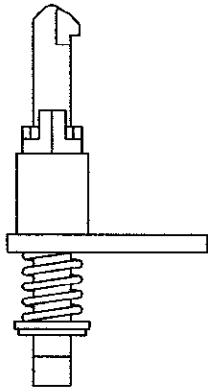
Female Jackscrew Guide
(Polarised)



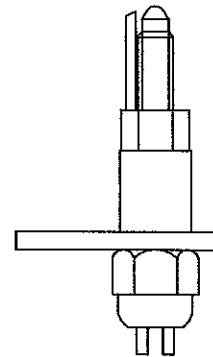
P.C.B. Mounting Brackets available with female fixings if required

FEMALE CONNECTORS

Fixing and Locking Accessories



Male Guide Pin
90° Locking (Polarised)



Male Jackscrew
(Polarised)

ELECTRICAL

Current (individual contacts) - 3.3A @ 25°C / 2.6A @ 85°C

Current (all contacts) - 3.0A @ 25°C / 2.2A @ 85°C

Contact Resistance (initially) - 10mOhms max

Contact Resistance (after conditioning) - 13mOhms max

Working Voltage (sea level) - 250V d.c. or a.c. peak

Proof Voltage (sea level) - 1000V d.c or a.c. peak

Insulation Resistance (initial) - 1000MOhms (min)

Insulation Resistance (after conditioning) - 100MOhms (min)

ENVIRONMENTAL

Operating temperature - 55° TO +125°C

Vibration Severity (General) - 10Hz to 2000Hz @ 0.75mm/10g for 6hrs

Vibration (additional) - 13.3Hz to 2000Hz random with superimposed sinusoids, duration 15minutes in each of four planes. No intermittencies when measured using an H.S.L.I. detector with trip threshold of 2nsec

Bump severity - 390M/sec/sec (40g) 4000±10 bumps

Shock severity - 981M/sec/sec (100g) for 6msec

Acceleration severity - 490M/sec/sec (50g)

Salt spray - 96hrs

Humidity - 56 days