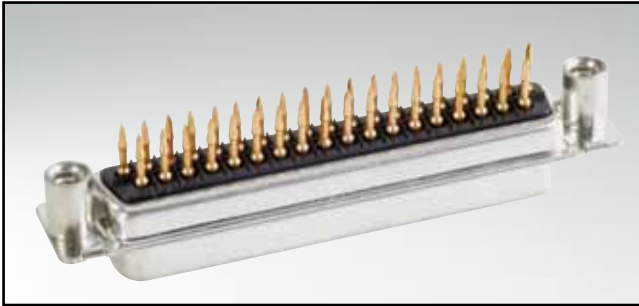


D-SUB STANDARD

Press-fit contact – Straight – Precision machined contacts



IN2CONNECT
ELECTRONIC CONNECTORS

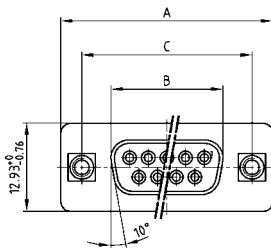


RoHS compliant – CSA listed, File No.: LR 115000-1 – UL listed, File No.: E202784

DESCRIPTION

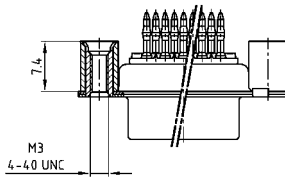
- Mounting style:
with M3 or 4-40 UNC threaded rear spacer
- For .040" / 1.0 mm ± $\frac{0.003}{.002}$ / $\frac{0.09}{0.06}$ mm finished through-hole diameter
Refer to product drawing for details
- Quality class 3 (also available in quality class 1)
- Shell: Steel tin plated (brass tin plated or stainless steel available on request)
- Order press-fit tool separately

SOCKET CONNECTOR

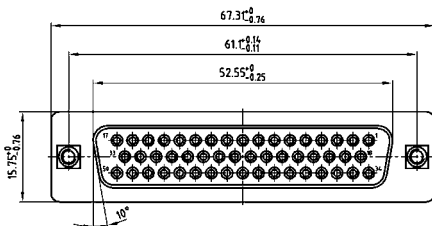
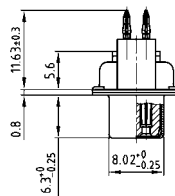


No. of pos.	A -0.76	B -0.25	C
09	31.19	16.46	25.00 ±0.12
15	39.52	24.79	33.30 $\begin{smallmatrix} +0.15 \\ -0.10 \end{smallmatrix}$
25	53.42	38.50	47.04 ±0.13
37	69.70	54.96	63.50 ±0.13

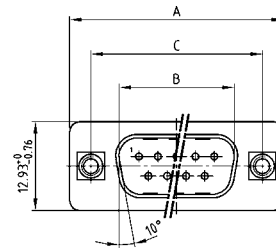
9-37 pos.



50 pos.

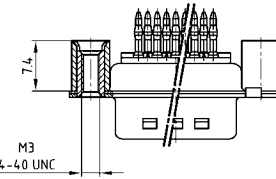


PLUG CONNECTOR

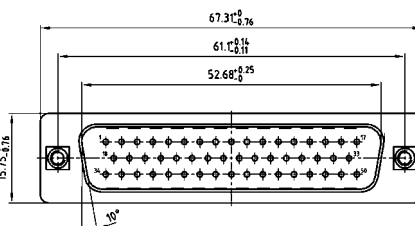
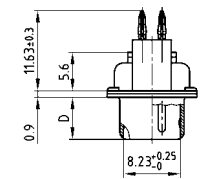


No. of pos.	A -0.76	B +0.25	C	D -0.3
09	31.19	16.79	25.00 ±0.12	6.12
15	39.52	25.12	33.30 $\begin{smallmatrix} +0.15 \\ -0.10 \end{smallmatrix}$	6.12
25	53.42	38.84	47.04 ±0.13	5.99
37	69.70	55.30	63.50 ±0.13	5.99

9-37 pos.



50 pos.



ORDER DATA

SOCKET CONNECTOR		
No. of pos.	Mounting style	Part Number
09	4-40 UNC Threaded rear spacer	DSS 1XSFAA49 X
15	4-40 UNC Threaded rear spacer	DSS 2XSFAA49 X
25	4-40 UNC Threaded rear spacer	DSS 3XSFAA49 X
37	4-40 UNC Threaded rear spacer	DSS 4XSFAA49 X
50	4-40 UNC Threaded rear spacer	DSS 5XSFAA49 X
09	M3 Threaded rear spacer	DSS 1XSFAA50 X
15	M3 Threaded rear spacer	DSS 2XSFAA50 X
25	M3 Threaded rear spacer	DSS 3XSFAA50 X
37	M3 Threaded rear spacer	DSS 4XSFAA50 X
50	M3 Threaded rear spacer	DSS 5XSFAA50 X

PLUG CONNECTOR		
No. of pos.	Mounting style	Part Number
09	4-40 UNC Threaded rear spacer	DSS 1XPFAA49 X
15	4-40 UNC Threaded rear spacer	DSS 2XPFAA49 X
25	4-40 UNC Threaded rear spacer	DSS 3XPFAA49 X
37	4-40 UNC Threaded rear spacer	DSS 4XPFAA49 X
50	4-40 UNC Threaded rear spacer	DSS 5XPFAA49 X
09	M3 Threaded rear spacer	DSS 1XPFAA50 X
15	M3 Threaded rear spacer	DSS 2XPFAA50 X
25	M3 Threaded rear spacer	DSS 3XPFAA50 X
37	M3 Threaded rear spacer	DSS 4XPFAA50 X
50	M3 Threaded rear spacer	DSS 5XPFAA50 X

Tel: +44 (0)1962 773004
Fax: +44 (0)1962 773104

sales@in2connect.uk.com
<www.in2connect.uk.com>

D-SUB STANDARD

Press-fit contact – Straight – Precision machined contacts – Rear press-fit spacer

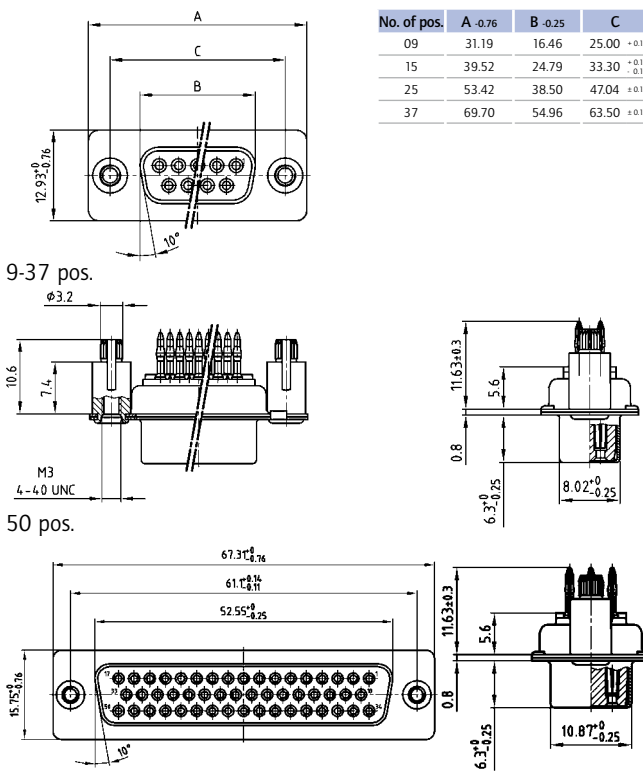


RoHS compliant – CSA listed, File No.: LR 115000-1 – UL listed, File No.: E202784

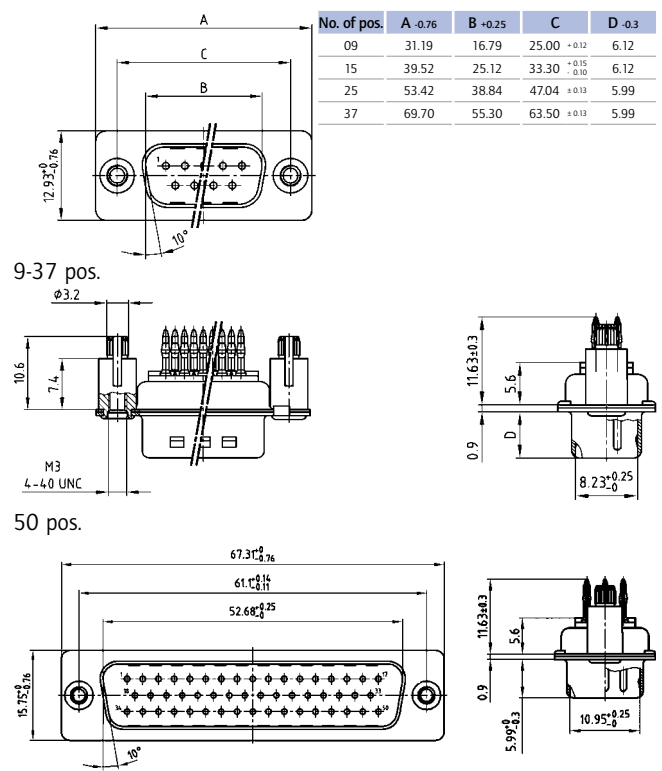
DESCRIPTION

- Mounting style:
with M3 or 4-40 UNC rear press-fit spacer
- For .040" / 1.0 mm ± $\begin{matrix} .003^+ / .09 \text{ mm} \\ .002^- / .06 \text{ mm} \end{matrix}$ finished through-hole diameter
Refer to product drawing for details
- Quality class 3 (also available in quality class 1)
- Shell: Steel tin plated (brass tin plated or stainless steel available on request)
- Order press-fit tool separately

SOCKET CONNECTOR



PLUG CONNECTOR



ORDER DATA

SOCKET CONNECTOR		
No. of pos.	Mounting style	Part Number
09	4-40 UNC Rear press-fit spacer	DSS 1XSFAA54 X
15	4-40 UNC Rear press-fit spacer	DSS 2XSFAA54 X
25	4-40 UNC Rear press-fit spacer	DSS 3XSFAA54 X
37	4-40 UNC Rear press-fit spacer	DSS 4XSFAA54 X
50	4-40 UNC Rear press-fit spacer	DSS 5XSFAA54 X
09	M3 Rear press-fit spacer	DSS 1XSFAA53 X
15	M3 Rear press-fit spacer	DSS 2XSFAA53 X
25	M3 Rear press-fit spacer	DSS 3XSFAA53 X
37	M3 Rear press-fit spacer	DSS 4XSFAA53 X
50	M3 Rear press-fit spacer	DSS 5XSFAA53 X

PLUG CONNECTOR		
No. of pos.	Mounting style	Part Number
09	4-40 UNC Rear press-fit spacer	DSS 1XPFAA54 X
15	4-40 UNC Rear press-fit spacer	DSS 2XPFAA54 X
25	4-40 UNC Rear press-fit spacer	DSS 3XPFAA54 X
37	4-40 UNC Rear press-fit spacer	DSS 4XPFAA54 X
50	4-40 UNC Rear press-fit spacer	DSS 5XPFAA54 X
09	M3 Rear press-fit spacer	DSS 1XPFAA53 X
15	M3 Rear press-fit spacer	DSS 2XPFAA53 X
25	M3 Rear press-fit spacer	DSS 3XPFAA53 X
37	M3 Rear press-fit spacer	DSS 4XPFAA53 X
50	M3 Rear press-fit spacer	DSS 5XPFAA53 X

Rear press-fit spacer for .122" / 3.1 ± .004" / 0.10 mm hole diameter and .063" / 1.6 mm circuit board thickness.

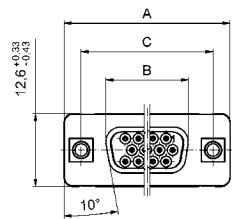
D-SUB HIGH DENSITY

Press-fit contact – Straight – Precision machined contacts



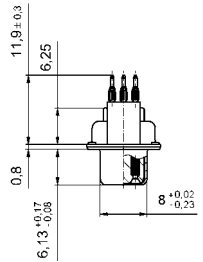
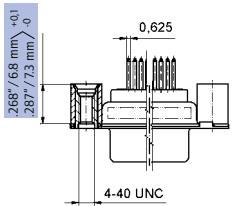
RoHS compliant – CSA listed, File No.: LR 115000-1 – UL listed, File No.: E202784

SOCKET CONNECTOR

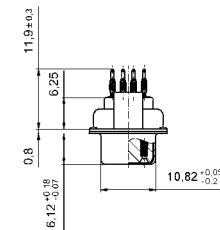
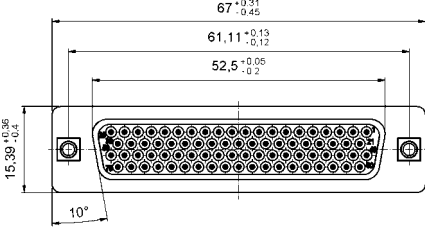


No. of pos.	A	B	C
15	30.88 ^{+0.31} _{-0.45}	16.41 ^{+0.05} _{-0.20}	24.99 ^{+0.13} _{-0.12}
26	39.22 ^{+0.30} _{-0.46}	24.74 ^{+0.05} _{-0.20}	33.32 ^{+0.13} _{-0.12}
44	53.09 ^{+0.33} _{-0.43}	38.51 ⁺⁰ _{-0.26}	47.04 ^{+0.13} _{-0.12}
62	69.50 ^{+0.20} _{-0.56}	54.94 ^{+0.05} _{-0.23}	63.50 ^{+0.13} _{-0.12}

15-62 pos.



78 pos.



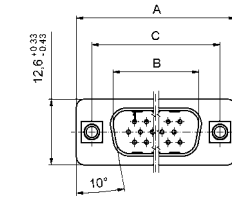
ORDER DATA

SOCKET CONNECTOR		
No. of pos.	Mounting style 4-40 UNC thread	Part Number
15	Threaded rear spacer .268" / 6.8 mm	DSH 1XSGAA48 X
26	Threaded rear spacer .268" / 6.8 mm	DSH 2XSGAA48 X
44	Threaded rear spacer .268" / 6.8 mm	DSH 3XSGAA48 X
62	Threaded rear spacer .268" / 6.8 mm	DSH 4XSGAA48 X
78	Threaded rear spacer .268" / 6.8 mm	DSH 5XSGAA48 X
15	Threaded rear spacer .287" / 7.3 mm	DSH 1XSHAA49 X
26	Threaded rear spacer .287" / 7.3 mm	DSH 2XSHAA49 X
44	Threaded rear spacer .287" / 7.3 mm	DSH 3XSHAA49 X
62	Threaded rear spacer .287" / 7.3 mm	DSH 4XSHAA49 X
78	Threaded rear spacer .287" / 7.3 mm	DSH 5XSHAA49 X

DESCRIPTION

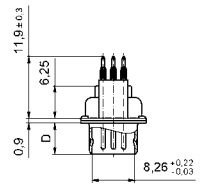
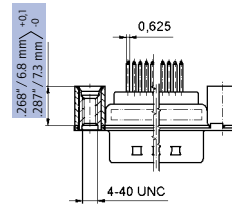
- Mounting styles:
 - with .268" / 6.8 mm threaded rear spacer and 4-40 UNC
 - with .287" / 7.3 mm threaded rear spacer and 4-40 UNC
- For .040" / 1.0 mm ^{+0.003"/0.09 mm} / _{-.002"/0.06 mm} finished through-hole diameter
Refer to product drawing for details
- Quality class 3 (also available in quality class 1)
- Shell: Steel tin plated (brass tin plated or stainless steel available on request)

PLUG CONNECTOR

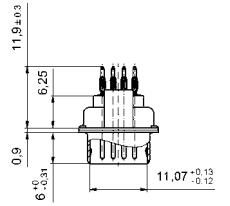
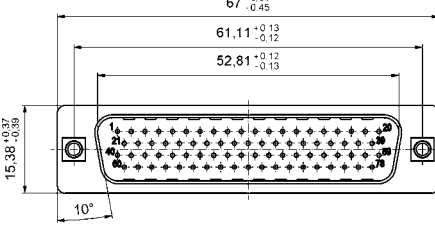


No. of pos.	A	B	C	C
15	30.88 ^{+0.31} _{-0.45}	16.41 ^{+0.05} _{-0.20}	24.99 ^{+0.13} _{-0.12}	6.00 ^{+0.12} _{-0.18}
26	39.22 ^{+0.30} _{-0.46}	24.74 ^{+0.05} _{-0.20}	33.32 ^{+0.13} _{-0.12}	6.00 ^{+0.12} _{-0.18}
44	53.09 ^{+0.33} _{-0.43}	38.51 ⁺⁰ _{-0.26}	47.04 ^{+0.13} _{-0.12}	6.00 ^{+0.13} _{-0.30}
62	69.50 ^{+0.20} _{-0.56}	54.94 ^{+0.05} _{-0.23}	63.50 ^{+0.13} _{-0.12}	6.00 ^{+0.13} _{-0.30}

15-62 pos.



78 pos.



PLUG CONNECTOR		
No. of pos.	Mounting style 4-40 UNC thread	Part Number
15	Threaded rear spacer .268" / 6.8 mm	DSH 1XPGAA48 X
26	Threaded rear spacer .268" / 6.8 mm	DSH 2XPGAA48 X
44	Threaded rear spacer .268" / 6.8 mm	DSH 3XPGAA48 X
62	Threaded rear spacer .268" / 6.8 mm	DSH 4XPGAA48 X
78	Threaded rear spacer .268" / 6.8 mm	DSH 5XPGAA48 X
15	Threaded rear spacer .287" / 7.3 mm	DSH 1XPHAA49 X
26	Threaded rear spacer .287" / 7.3 mm	DSH 2XPHAA49 X
44	Threaded rear spacer .287" / 7.3 mm	DSH 3XPHAA49 X
62	Threaded rear spacer .287" / 7.3 mm	DSH 4XPHAA49 X
78	Threaded rear spacer .287" / 7.3 mm	DSH 5XPHAA49 X

D-SUB HIGH DENSITY

Press-fit contact – Straight – Precision machined contacts – Rear press-fit spacer

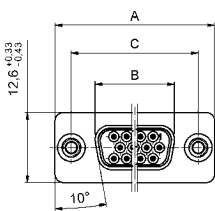


RoHS compliant – CSA listed, File No.: LR 115000-1 – UL listed, File No.: E202784

DESCRIPTION

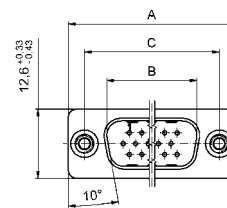
- Mounting styles:
 - with .268" / 6.8 mm rear press-fit spacer and 4-40 UNC
 - with .287" / 7.3 mm rear press-fit spacer and 4-40 UNC
- For .040" / 1.0 mm ^{+0.003"/0.09mm} / ^{.002"/0.06mm} finished through-hole diameter
Refer to product drawing for details
- Quality class 3 (also available in quality class 1)
- Shell: Steel tin plated (brass tin plated or stainless steel available on request)

SOCKET CONNECTOR



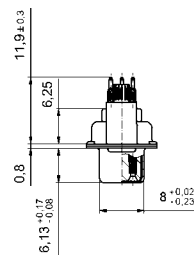
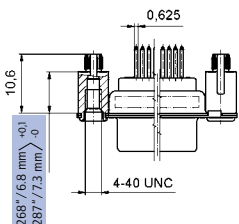
No. of pos.	A	B	C
15	30.88 ^{+0.31} / _{-0.45}	16.41 ^{+0.05} / _{-0.20}	24.99 ^{+0.13} / _{-0.12}
26	39.22 ^{+0.30} / _{-0.46}	24.74 ^{+0.05} / _{-0.20}	33.32 ^{+0.13} / _{-0.12}
44	53.09 ^{+0.33} / _{-0.43}	38.51 ⁺⁰ / _{-0.26}	47.04 ^{+0.13} / _{-0.12}
62	69.50 ^{+0.20} / _{-0.56}	54.94 ^{+0.05} / _{-0.23}	63.50 ^{+0.13} / _{-0.12}

PLUG CONNECTOR

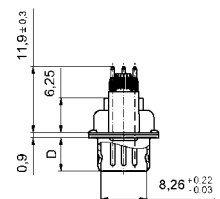
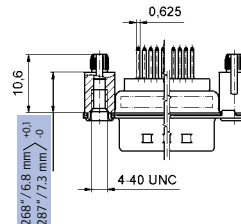


No. of pos.	A	B	C	C
15	30.88 ^{+0.31} / _{-0.45}	16.41 ^{+0.05} / _{-0.20}	24.99 ^{+0.13} / _{-0.12}	6.00 ^{+0.12} / _{-0.18}
26	39.22 ^{+0.30} / _{-0.46}	24.74 ^{+0.05} / _{-0.20}	33.32 ^{+0.13} / _{-0.12}	6.00 ^{+0.12} / _{-0.18}
44	53.09 ^{+0.33} / _{-0.43}	38.51 ⁺⁰ / _{-0.26}	47.04 ^{+0.13} / _{-0.12}	6.00 ^{+0.13} / _{-0.30}
62	69.50 ^{+0.20} / _{-0.56}	54.94 ^{+0.05} / _{-0.23}	63.50 ^{+0.13} / _{-0.12}	6.00 ^{+0.13} / _{-0.30}

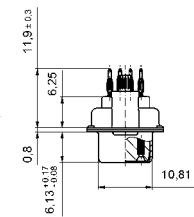
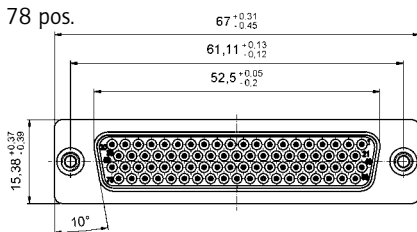
15-62 pos.



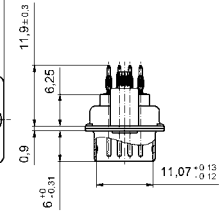
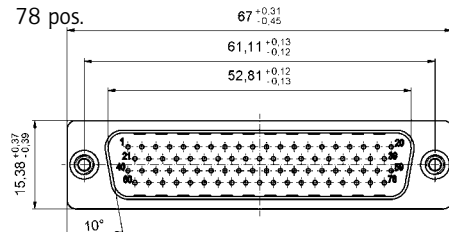
15-62 pos.



78 pos.



78 pos.



ORDER DATA

SOCKET CONNECTOR		
No. of pos.	Mounting style 4-40 UNC thread	Part Number
15	Rear press-fit spacer .268" / 6.8 mm	DSH 1XSGAA58 X
26	Rear press-fit spacer .268" / 6.8 mm	DSH 2XSGAA58 X
44	Rear press-fit spacer .268" / 6.8 mm	DSH 3XSGAA58 X
62	Rear press-fit spacer .268" / 6.8 mm	DSH 4XSGAA58 X
78	Rear press-fit spacer .268" / 6.8 mm	DSH 5XSGAA58 X
15	Rear press-fit spacer .287" / 7.3 mm	DSH 1XSHAA54 X
26	Rear press-fit spacer .287" / 7.3 mm	DSH 2XSHAA54 X
44	Rear press-fit spacer .287" / 7.3 mm	DSH 3XSHAA54 X
62	Rear press-fit spacer .287" / 7.3 mm	DSH 4XSHAA54 X
78	Rear press-fit spacer .287" / 7.3 mm	DSH 5XSHAA54 X

PLUG CONNECTOR		
No. of pos.	Mounting style 4-40 UNC thread	Part Number
15	Rear press-fit spacer .268" / 6.8 mm	DSH 1XPGA58 X
26	Rear press-fit spacer .268" / 6.8 mm	DSH 2XPGA58 X
44	Rear press-fit spacer .268" / 6.8 mm	DSH 3XPGA58 X
62	Rear press-fit spacer .268" / 6.8 mm	DSH 4XPGA58 X
78	Rear press-fit spacer .268" / 6.8 mm	DSH 5XPGA58 X
15	Rear press-fit spacer .287" / 7.3 mm	DSH 1XPHAA54 X
26	Rear press-fit spacer .287" / 7.3 mm	DSH 2XPHAA54 X
44	Rear press-fit spacer .287" / 7.3 mm	DSH 3XPHAA54 X
62	Rear press-fit spacer .287" / 7.3 mm	DSH 4XPHAA54 X
78	Rear press-fit spacer .287" / 7.3 mm	DSH 5XPHAA54 X