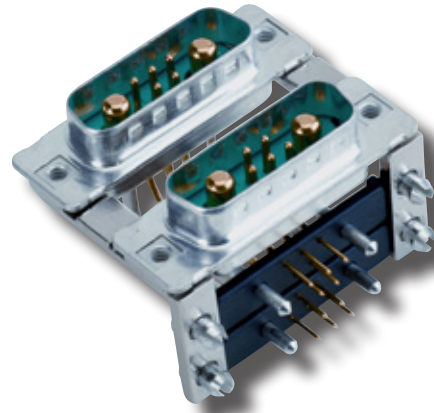


## Product Extension

Combination D-SUB product family has been enlarged by Dual Ports with angled solder pins



## DUAL PORT WITH SIGNAL AND POWER CONTACTS

- Precision machined contacts
- Connector spacing .750"/19,05mm
- Designs:
  - 5W1 - 7W2 - 13W3 - 17W2 - 17W5
  - 2W2C - 3W3 - 3W3C - 5W5 - 8W8
- Mounting style:
  - with mounting bracket and 4-40 UNC threaded insert
  - with mounting bracket, PCB-clip and 4-40 UNC threaded insert
- Quality class 3 (also available in quality class 1)
- Shell: Steel tin plated
  - brass tin plated available on request
  - stainless steel available on request
- Other variations on request

