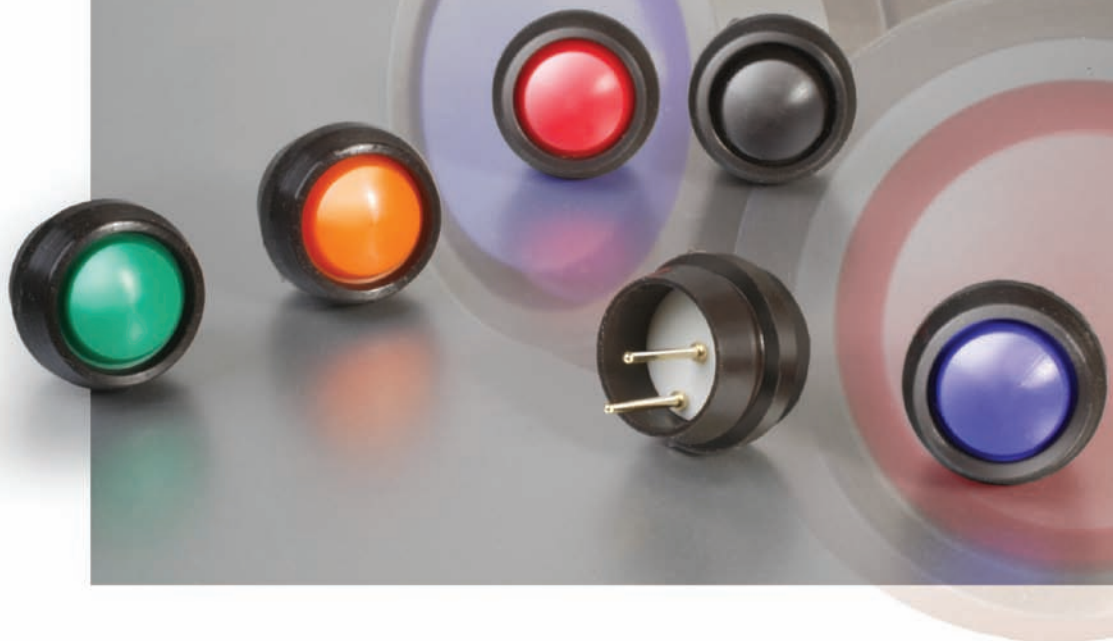


Series 47



SNAP ACTION

CUSTOM ASSEMBLIES

PUSH BUTTON

SEALED

ROCKER

INDICATOR

SLIDE

VANDAL RESISTANT

ILLUMINATED

ACTIVE TOUCH

Low Cost Sealed Pushbutton Switch

The Series 47 is a uniquely designed sealed miniature pushbutton switch. The silicone button and body can be panel mounted and terminated with a standard connector or mounted in a P.C. board. The switches come in two levels of sealing: a panel sealed only version and a fully sealed version with epoxy sealed base. Both meet IP67 requirements. The buttons are available in seven different colors. All this at a very affordable price.

Key Features

- Sealed to IP67
- Small size
- 7 button colours
- P.C. terminals (connector available)
- Long life
- Low cost

Typical Applications

- Marine equipment
- Medical equipment
- Outdoor controls
- Food processing equipment
- Appliances
- Recreational vehicles



IN2CONNECT
ELECTRONIC CONNECTORS

TW Switches

Tel: +44(0)1962 773004
Fax: +44(0)1962 773104
sales@in2connect.uk.com
www.in2connect.uk.com

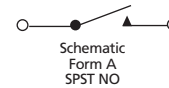
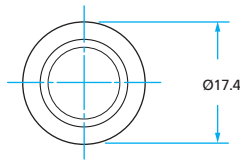
Standards / Agency / Ratings



Patent # 6,965,085

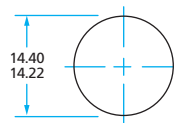
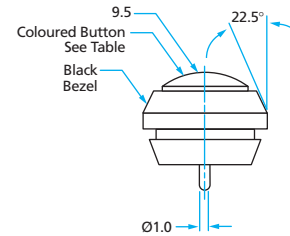
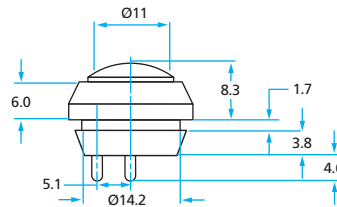
Series 47 Low Cost Sealed Pushbutton

47-11X1 and 47-21X1

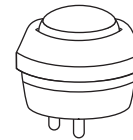


Mechanical/Electrical Characteristics:

- **Travel (nom)**
.020" (0.5mm)
- **Life (min)**
100,000 cycles
- **Operating force (nom)**
1,000g
- **Sealed to**
IP67
- **Operating temperature**
-40°C to +85°C
- **Button material**
silicone
- **Contact**
metal snap dome providing a tactile feel
- **Terminal finish**
gold over nickel
- **Dielectric strength**
1,000 VRMS
- **Insulation Resistance**
10,000 Meg Ohms
- **Contact Resistance (initial)**
<100 Ohms
- **Current rating**
20 mA @28 VDC
- **Switch terminals mate with ITW Pancon Mas-Con Connector**
CE100F24-3-DB
- **Recommended panel thickness**
.060 (1.52mm) max



Recommended
Panel Cut-out



Ordering Information

Part Number	Button Colour	Panel Sealed	Epoxy Sealed Base
47 -1111	Black	✓	✓
47 -1121	Red	✓	✓
47 -1131	Green	✓	✓
47 -1141	White	✓	✓
47 -1151	Yellow	✓	✓
47 -1161	Blue	✓	✓
47 -1171	Orange	✓	✓
47 -2111	Black	✓	
47 -2121	Red	✓	
47 -2131	Green	✓	
47 -2141	White	✓	
47 -2151	Yellow	✓	
47 -2161	Blue	✓	
47 -2171	Orange	✓	

ITW Switches

ITW Switches Limited
Norway Road, Portsmouth, Hampshire PO3 5HT United Kingdom
Tel: 023 9265 6200 Fax: 023 9266 6352
Email: info@itwswitches.co.uk

www.itwswitches.co.uk