

PART NUMBER CODING
C23DCYB - S1884

NUMBER OF POSITIONS
(CONTACTS PER ROW)

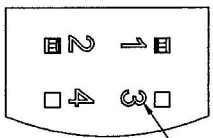
PLATING

- E = PBT/PHOSPHOR BRONZE
- OPERATING TEMP: -65°C TO +125°C
- PROCESSING TEMP: WAVE/MANUAL SOLDERING ONLY
- R = PPS/PHOSPHOR BRONZE
- OPERATING TEMP: -65°C TO +125°C
- PROCESSING TEMP: 260°C MAX FOR 20 SECONDS
- G = PA9T/PHOSPHOR BRONZE
- OPERATING TEMP: -65°C TO +125°C
- PROCESSING TEMP: 260°C MAX FOR 20 SECONDS

ALL PLATINGS HAVE .000050" NICKEL UNDERPLATE
CONTACT SURFACE TERMINATION
B = .000010" PURE TIN MATTE
C = .000030" GOLD
.000100" PURE TIN MATTE

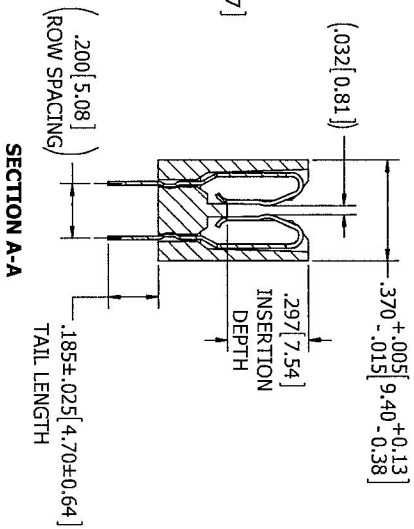
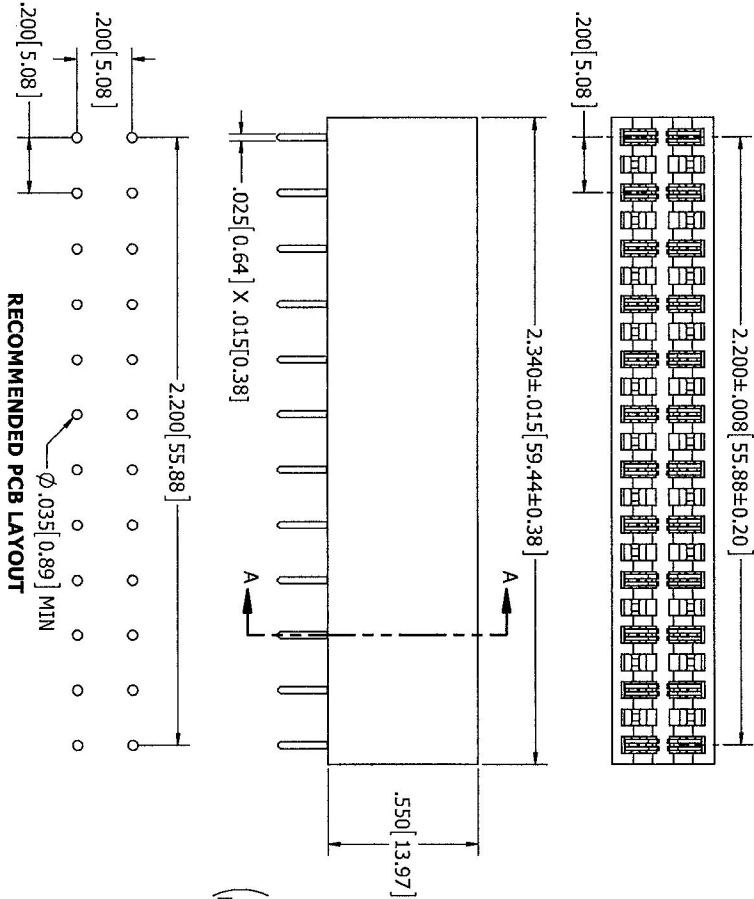
| REV. NO. | | DESCRIPTION | | DATE | | BY | |
|----------|---|-----------------|--|----------|--|------|--|
| A | - | INITIAL RELEASE | | 2/2/2015 | | JHSU | |

PRELIMINARY

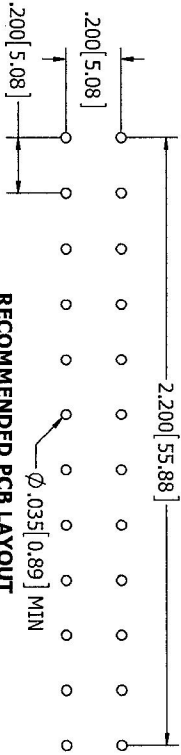


CONTACT MARKINGS:
1 3 ... 43 45
2 4 ... 44 46

CONTACT ID
SCALE 6 : 1



RECOMMENDED PCB LAYOUT



- NOTES:
1. INSULATOR MATERIAL: SEE PART NUMBER CODING
 2. CONTACT MATERIAL: SEE PART NUMBER CODING
 3. PLATING: SEE PART NUMBER CODING
 4. OPERATING TEMPERATURE: SEE PART NUMBER CODING
 5. PROCESSING TEMP: SEE PART NUMBER CODING
 6. UL FLAMMABILITY RATING: 94V-0
 7. OPERATING VOLTAGE: 700 VAC MINIMUM AT SEA LEVEL
 8. CURRENT RATING: 3 AMP
 9. CONTACT RESISTANCE: 30 MILLI OHMS MAX
 10. INSULATION RESISTANCE: 5000 MEGA OHMS
 11. DURABILITY: 500 CYCLES MIN
 12. CONNECTOR IDENTIFICATION: THE PART SHALL BE MARKED WITH A PART NUMBER AND LOT CODE
 13. BOARD THICKNESS ACCOMMODATED: .062 ± .008 [1.57 ± 0.20]
 14. INSERTION FORCE: 16 OZ MAX PER CONTACT PAIR WHEN USING A .062 [1.57] TEST BLADE
 15. WITHDRAWAL FORCE: 1 OZ MIN PER CONTACT PAIR USING .062 [1.57] PCB
 16. MODIFICATION: LOAD EVERY OTHER POSITION STARTING AT POSITION 1

CUSTOMER COPY



| | | | |
|---|--|------------------------|--|
| UNLESS OTHERWISE SPECIFIED, DIMENSIONS ARE IN INCHES (MM) | | DRAWN DATE NAME | |
| TOLERANCES: | | 2/2/2015 JHSU | |
| ANGULAR: ± 1° | | TITLE | |
| DECIMALS: XX ± .02 [.51] | | EDGE CARD, .100 CC, HP | |
| XXX ± .005 [0.13] | | PART NUMBER | |
| | | C23DCYB-S1884 | |
| | | DWG. NO. | |
| | | C12604 | |
| | | SHEET | |
| | | 54453 | |
| | | SCALE: 3:1 | |
| | | SHEET 1 OF 1 | |

