

Technical specification:

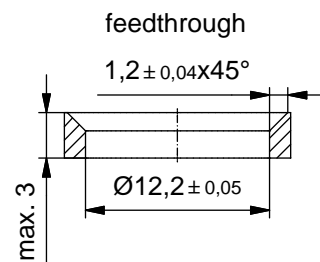
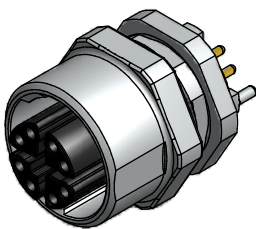
Rated voltage: IEC 61076-2-109	48 V
Current rating: IEC 61076-2-109	500 mA at 40°C
Transmission properties: ISO IEC 11801	10 Gigabit Ethernet CAT6
Insulation resistance: IEC 60512	≥100 MΩ
Surge voltage category: IEC 60664-1	III
Pollution degree: IEC 60664-1	3
Degree of protection: IEC 60529	IP 67, in mated condition
Temperature range: IEC 60664-1	-40°C ... +90°C
Mating cycles: IEC 60512-9a	≥100

Materials:

Contact:	CuZn
Contact plating:	Nickel, gold plated
Contact carrier:	PPA
Sealing:	EPDM
Counternut:	GD-Zn, nickel plated
Socket housing:	GD-Zn, nickel plated

Installation specification:

Recommended torque:	0,8-1 Nm
Conec installation tool:	Torque wrench: 36-000200 Insert across flats 15: 36-000320



Part no:	Description:	Pos	Length L:
43-01847	SAL - 12X - FK8.8 / X7,2 / 12	8	7,2mm

DO NOT ALTER CAD DRAWING BY HAND Directive 2002/95/EC RoHS compliant	dim. in mm		title: Female socket M12x1 X-coded with dip solder, frontmounting		
		date			name
		drawn	14.10.11	Kniesburges	dwg no: 43K1A1477
		appd.	14.10.11	W.Schmidt	
general tolerance: 0 ± 0,50mm 0,0 ± 0,25mm 0,00 ± 0,10mm				part no: see table	
<small>THIS DRAWING MAY NOT BE COPIED OR REPRODUCED IN ANY WAY, AND MAY NOT BE PASSED ON TO A THIRD PARTY WITHOUT WRITTEN PERMISSION. OWNERSHIP AND COPYRIGHT OF CONEC GmbH</small>					